



CEO Report

LIPA Board of Trustees Meeting

January 23, 2025

Presented by: John Rhodes, Acting Chief Executive Officer



Discussion Topics



Staff News



Clean, Reliable, Affordable



2025 CEO Priorities



Community Announcements

A photograph of an offshore wind farm with several wind turbines in a row across a blue sea. The image is overlaid with a semi-transparent blue geometric pattern of overlapping shapes. The text 'Staff News' is centered in white.

Staff News

Welcome to the LIPA team, **Greg Flay!**

- LIPA's new Chief Information Officer, Greg Flay joined our team on January 13.
- Greg comes to LIPA from Austin Energy where he served as Vice President of Technology and Data.
- Greg holds both a Bachelor's and Master's Degree from Pennsylvania State University and a Ph.D. from the University of Minnesota.
- As the CIO, Greg is responsible for leading the strategic direction, planning, and implementation of information technology initiatives.



Welcome to the LIPA team, **Joseph LaMotta!**

- Joe LaMotta comes to LIPA from PSEG Long Island, where he served as a Senior Manager in Procurement.
- As LIPA's new Director of Procurement Strategy and Operations, Joe will be responsible for overseeing PSEG Long Island's Procurement Department and meeting the policy goals and reporting requirements of New York State Public Authorities.
- Joe holds a Bachelor's Degree from the University of Albany.



Saying goodbye to a **long-time** colleague

Mark Smith, Senior Manager of Rates

- Congratulations to Mark Smith on his official retirement from LIPA, effective as of January 3.
- Throughout his 14 years of service, Mark was a fierce advocate for our customers and his dedication to upholding our Board Policy on Affordability and Rate Design is exemplary.

A photograph of several offshore wind turbines in the ocean, viewed from a low angle. The turbines are white with three blades each. The water is a deep blue, and the sky is a lighter blue. The image is overlaid with a semi-transparent blue geometric pattern consisting of various shapes like triangles and polygons. The text "Clean, Reliable, Affordable" is centered in white.

Clean, Reliable, Affordable

New Technology on Distribution Equipment

Together, LIPA and PSEG Long Island are working on new programs to improve the technology of our electric system. We're adding thousands of new 'smart devices' and have automated hundreds of existing devices to make the grid more resilient and reliable.

These initiatives will:

- Significantly improve system reliability by reducing both the number and duration of outages for our customers.
- Have advanced technology with intelligence to automatically detect and restore power on temporary issues, such as a tree branch brushing against an electrical line, within seconds. Additionally, it will also reduce the number of customers impacted during an outage event.
- Distribution equipment will be deployed in accordance with LIPA's cybersecurity requirements and any applicable North American Electric Reliability Corporation regulatory requirements.

FEMA Grant Work in Disadvantaged Communities

This month, LIPA received its second \$5 million grant to replace at-risk poles in Disadvantaged Communities in Suffolk County.

- In June 2022, LIPA filed two separate applications under FEMA’s Hazard Mitigation Grant Program – one for Suffolk County and another for Nassau/Queens. The Nassau/Rockaways (Queens) application was awarded in 2024, while Suffolk was just approved on January 15, 2025.
- Each grant will enable LIPA to replace approximately 385 poles in Nassau/Rockaways and Suffolk County.
- As these applications were filed under the COVID-19 disaster, LIPA is entitled to a 90% cost-share (FEMA pays 90%, LIPA pays 10%).
- Construction will begin later this year and should be completed in about one year.

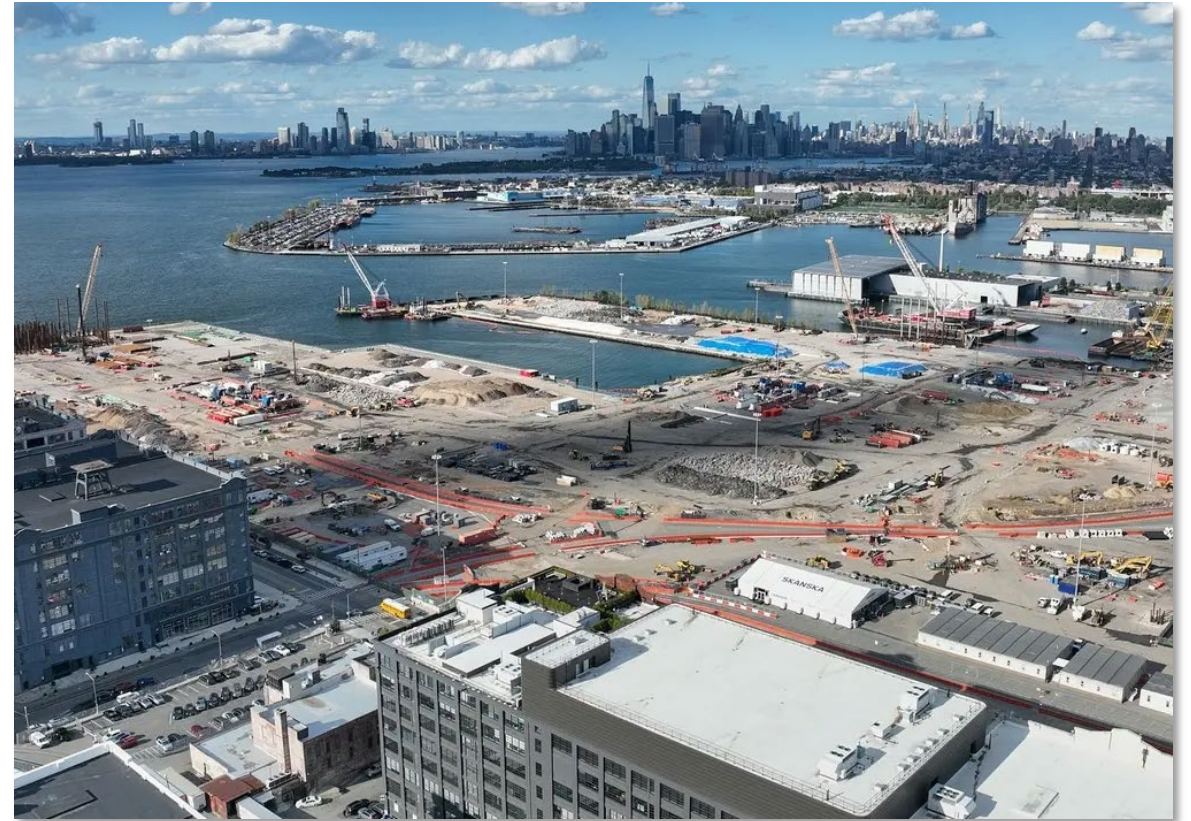
South Fork Wind Performance

- In November, South Fork Wind produced energy in quantities that almost exactly matched our forecast made in 2023 – 73 megawatts on average across all hours of the month.
- We expect the summer months to be the lowest production period (~40 MW on average) and the winter months to be the highest production period (~80 MW on average).



Equinor Secures \$3 Billion Financing Package for Empire Wind 1

- Equinor has announced a \$3 billion financing package for Empire Wind 1. The project is currently under construction and will interconnect at the South Brooklyn Marine Terminal in Sunset Park, Brooklyn.
- This marks a major step forward for the project, which is slated to power over 500,000 homes and is expected to be complete in 2027.
- Total capital investments, including fees for the use of the South Brooklyn Marine Terminal, are approximately \$5 billion, including the effect of expected future tax credits.

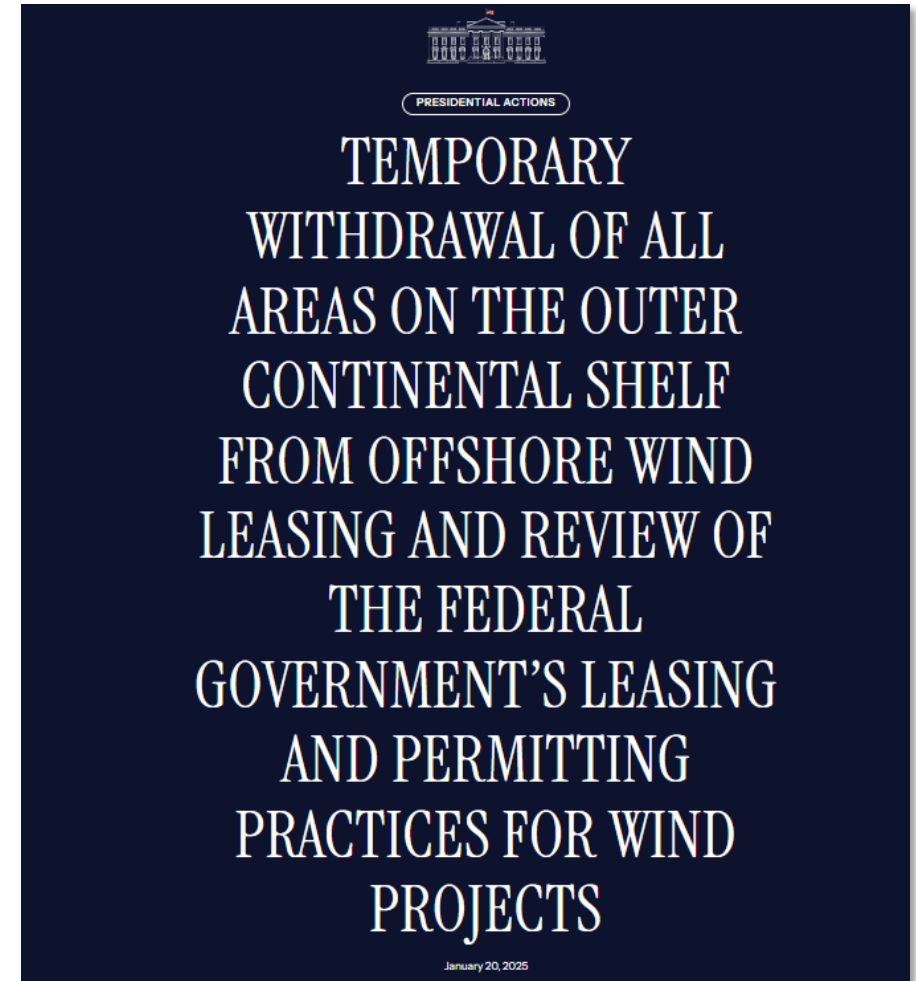


South Brooklyn Marine Terminal

White House Executive Order: Wind Projects

This week, President Trump signed an executive order temporarily halting offshore wind lease sales in federal waters and pausing the issuance of approvals, permits, and loans for both onshore and offshore wind projects.

- LIPA is closely following NYSERDA's ongoing assessment to see if this order will affect Sunrise Wind and Empire Wind 1, as both have already received federal permits from the Bureau of Ocean Energy Management.
- Sunrise Wind has already begun construction and is expected to be complete in 2027.



A photograph of an offshore wind farm in the ocean, with several wind turbines visible in the distance and a closer one in the foreground. The image is overlaid with a semi-transparent blue geometric pattern consisting of various shapes like squares and triangles. The text "2025 CEO Priorities" is centered in white.

2025 CEO Priorities

CEO Priorities for the year ahead

Operations Services Request for Proposals

- Successful outcome of the process for a future service provider

Our Mission: Clean, Reliable, and Affordable Electric Service

- Continuing meaningful progress to provide clean, reliable, and affordable electric service

Storm Preparedness and Readiness

- Enhancing our preparation and readiness for major storms

Community Advisory Board

- Strengthening engagement with the Community Advisory Board

Community Partnerships

- Securing key partnership initiatives with our local communities

A photograph of several offshore wind turbines in the ocean, viewed from a low angle. The turbines are white with three blades each, mounted on steel jackets. The water is a deep blue, and the sky is a lighter blue. The image is overlaid with a semi-transparent blue geometric pattern consisting of various shapes like triangles and polygons. The text 'Community Partnerships' is centered in white.

Community Partnerships

Community College Scholarship Program



LIPA's Community College Scholarship covers full tuition, fees, and a book stipend for students at Nassau Community College and Suffolk County Community College. The program focuses on supporting students from underserved communities with household incomes below the Long Island median, enabling access to education in the electric utility and clean energy sectors.

- **New for 2025:** LIPA has partnered with United Way of Long Island to administer the scholarship program.
- This collaboration ensures effective outreach and implementation, leveraging United Way's expertise to maximize community impact and student success.

Stony Brook University Internship Program

The Advanced Energy Research and Technology Center (AERTC) Internship Program

The AERTC at Stony Brook University is a partnership of academic institutions, research institutions, energy providers, and industrial corporations. The Center's mission is to innovate energy research, education, and technology deployment with a focus on efficiency, conservation, renewable energy, and nanotechnology applications for new and novel sources of energy.

- **New for 2025:** LIPA is supporting the inaugural launch of the 'CyberLearn' program, which is designed to educate and develop a pipeline of highly skilled students for the energy sector, with a focus on cybersecurity and securing critical infrastructure.
- The Idaho National Laboratory and the U.S. Department of Energy developed the CyberLearn program's standardized curriculum.
- As part of its commitment, LIPA has contributed \$10,000 toward the program for 2025.
- Furthermore, in 2025, LIPA will offer summer internship opportunities to three students enrolled in the program, providing hands-on experience and fostering industry readiness.

Questions?

John Rhodes
Acting Chief Executive Officer

lipower.org

