



COMMUNITY ADVISORY BOARD

MEETING AGENDA

WEDNESDAY, MARCH 22, 2023 | 8:00 A.M.

I: WELCOME & INTRODUCTIONS

II: BRIEFING BY NYS COMMISSIONER JACKIE BRAY

III: LIPA BRIEFING ON PHYSICAL SECURITY

IV: LIPA BRIEFING ON CYBERSECURITY

V: TIME-OF-DAY RATE PROPOSAL

VI: LEGISLATIVE COMMISSION UPDATE

VII: ROUND TABLE DISCUSSION

NEXT MEETING DATE:

WEDNESDAY, JUNE 21, 2023 | 12:00 - 1:30 P.M.

JONES BEACH ENERGY & NATURE CENTER



COMMUNITY ADVISORY BOARD MEETING

March 22, 2023

A G E N D A

01

Welcome & Introductions

02

Briefing by NYS Commissioner Jackie Bray

03

LIPA Briefing on Physical Security

04

LIPA Briefing on Cyber Security

05

Time-of-Day Rate Proposal

06

Legislative Commission

07

Roundtable Discussion



WELCOME & INTRODUCTIONS

BRIEFING BY NYS COMMISSIONER JACKIE BRAY



**Homeland Security
and Emergency Services**

LIPA Community Advisory Board Meeting March 22, 2023

March 24, 2023

DHSES Mission

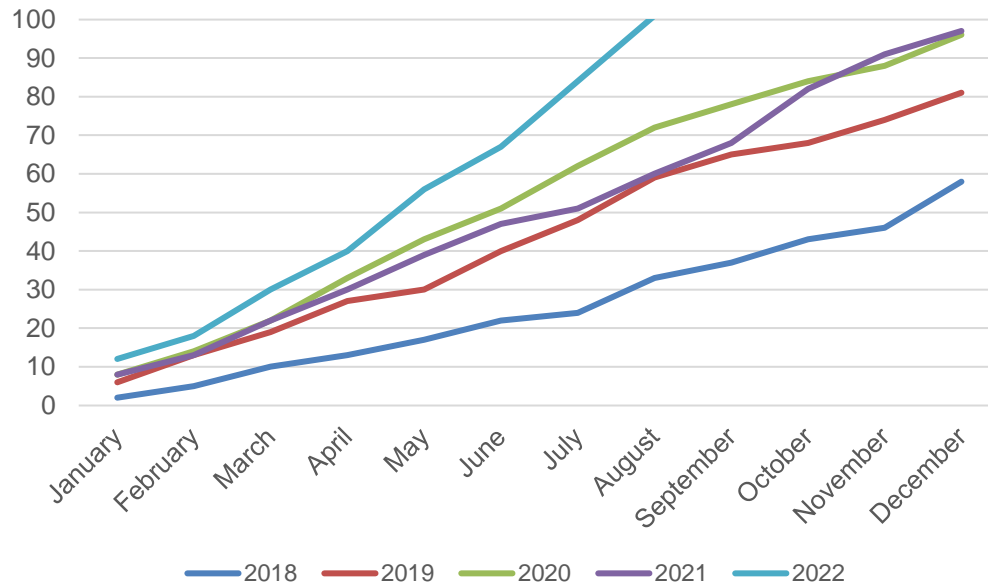
- Works to protect New Yorkers, their property, and the State's economic well-being from natural and human-caused emergencies and disasters.
- Strives to improve readiness and response across the Empire State through planning, training and a multitude of programs and partnerships with government, private sector, and other organizations.
- Coordinates response and recovery efforts of State agencies during emergencies and disasters in support of local government and its constituents.



Homeland Security
and Emergency Services

Diverse Threat Environment Facing Electric Grid

Cumulative number of reported human-caused attacks on power grid infrastructure in the US, 2018 - Aug 2022



- **Advanced Persistent Threat (APT) actors backed by adversarial nation-states.**
- **Domestic Violent Extremists (DVEs) such as Racially motivated violent extremists (RMVEs), Anti-Government Violent Extremists, and Accelerationists have increased their calls to supporters to destroy or damage Electricity Subsector assets.**
- **Technological hazard, such as events caused by humans, accidents, incorrect procedures, and infrastructure deficiencies.**
- **Criminal and financially motivated actors.**

Chart recreated from data in [Politico](#), "Physical attacks on power grid surge to new peak", 12/26/22 (Source: [DOE](#))

Recent Attacks on the Energy Industry

US woman and neo-Nazi leader plotted to attack power grid via sniper - officials

Sarah Beth Clendaniel allegedly conspired with Brandon Russell to attack electrical substations in the Baltimore area



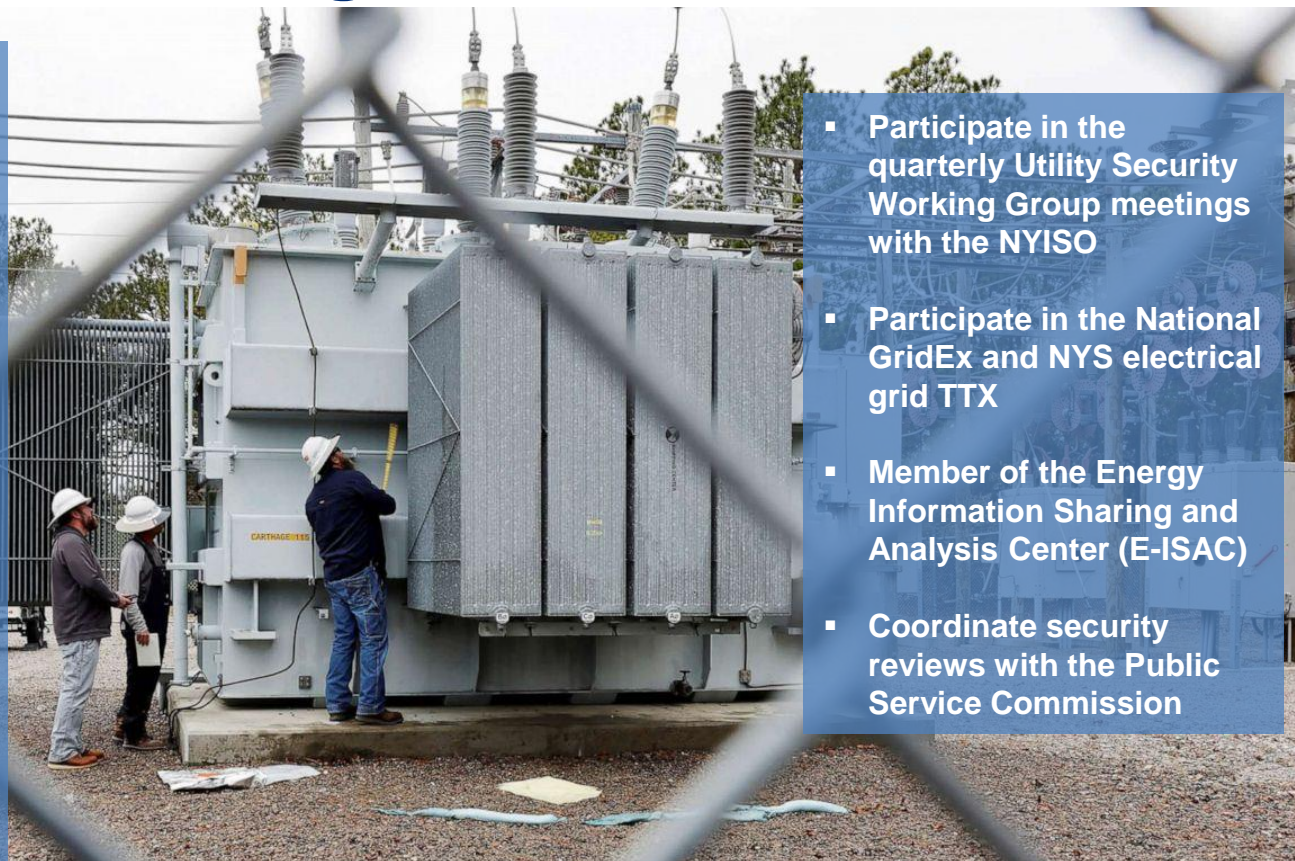
Associated Press article, February 6, 2023 ([Link](#))



Substation near Eagle Creek, Oregon attacked in November 2022 ([Source](#))

DHSES Efforts To Mitigate Threats

- December 2022 threat briefing for utility executives following the attack in Moore County, NC
- Consistent and timely information sharing on physical and cyber-related energy sector threat
- Physical security risk assessments provided at no cost to operators
- Red Team exercises to test and reinforce the state's "See Something Say Something" terrorism awareness outreach.



- Participate in the quarterly Utility Security Working Group meetings with the NYISO
- Participate in the National GridEx and NYS electrical grid TTX
- Member of the Energy Information Sharing and Analysis Center (E-ISAC)
- Coordinate security reviews with the Public Service Commission



New Tools to Combat Threats

- EO 18 issued in May 2022 creates the Domestic Terrorism Unit within DHSES
- 2022 Legislation to Protect Against Cyber Threats to New York's Electric Grid
- FY2024 Budget Proposal for First-Ever, Specialized Industrial Control System Assessment Team



Questions?



LIPA PHYSICAL SECURITY UPDATE

12

LIPA'S BOARD POLICY ON PHYSICAL SECURITY

- LIPA's Transmission & Distribution Operations Board Policy contains the following objective:

“Safeguard people and protect facilities and functions that support operations from unauthorized access or disruption through vulnerability assessments and risk mitigation.”

PHYSICAL SECURITY ASSESSMENT

- In 2022, LIPA engaged an independent third-party consultant to assess the current state of the utility's physical security posture and its compliance with the prevailing guidelines governing its security operations.
- Benchmarked LIPA's physical security maturity relative to industry standards.
- Identified and compiled a listing of common and site-specific findings and prioritized recommendations for improvement opportunity consideration.
- Created a 2023 Physical Security metric that has the objective of developing and executing plans to enhance physical security, including the integration of new technologies at critical locations, including control centers, substations, and yards.



LIPA CYBER SECURITY UPDATE

15

LIPA'S BOARD POLICY ON CYBER SECURITY

Cyber Security: LIPA will protect customer, employee, and third-party information and LIPA information systems from unauthorized access or disruption

OUR APPROACH TO PROTECTING CYBER ASSETS

- LIPA's new contract with PSEG Long Island (effective April 1, 2022) required the hiring of a Long Island Chief Information Security Officer and cyber security staff dedicated to LIPA's operations.
- LIPA and PSEG Long Island conduct **quarterly internal vulnerability assessments, annual third-party vulnerability assessments, and penetration testing** of all information and operational technology systems and promptly mitigate vulnerabilities.
- PSEG Long Island under the new contract with LIPA must maintain industry-benchmarked levels of cybersecurity as verified annually by an independent assessment by LIPA. LIPA has the **right to terminate the PSEG Long Island contract** should PSEG Long Island **fail to maintain compliance**, which provides a strong incentive for improvement.

INTELLIGENCE & INFORMATION SHARING

Joint Security Operations Center (JSOC)

- Statewide view of the cyber-threat landscape and improve coordination and agility on threat intelligence and incident response.



Electricity Subsector Coordinating Council (ESCC)

- ESCC – Electricity Subsector, Telecom, and Finance Coordination
- Cyber Mutual Assistance Program



Large Public Power Council (LPPC)

- Established a Cyber Security Task Force in 2016 – 27 Large Public Utilities
- Sharing of Cyber Security Program Practices – Benchmarking
- Participating in LPPC initiatives for all NYS Power companies monitoring and Information Sharing Platform, IronDome

American Public Power Association (APPA)

- APPA-DOE Funding Opportunities to Elevate Cyber Security Programs of its Members

Electricity Information Sharing and Analysis Center (E-ISAC)

- Physical and Cyber Security Information Threats Sharing

Northeast Power Coordinating Council (NPCC)

- Situation Awareness and Infrastructure Security (SAIS) Program

North American Electric Reliability Corporation (NERC)

- Mandatory Cyber Security Standards – NERC CIP



LIPA UPDATES

19



WELCOME TO LIPA'S NEW TRUSTEES

LIPA BOARD OF TRUSTEES

- LIPA is governed by a **local Board of Trustees consisting of customers** appointed by the Governor and Legislature. The Trustees serve for staggered four-year terms and are not compensated for their service
- The Board contracts with vendors; sets policy, strategy, and performance metrics for PSEG Long Island's service to our customers; finances the infrastructure investments necessary for a reliable electric grid; and leads Long Island's transition to a clean energy future
- All Trustees are statutorily required to have relevant utility, corporate board, or financial experience



Mark Fischl
Vice Chairman



Elkan Abramowitz
Trustee



Valerie Anderson Campbell
Trustee



Rev. Alfred Cockfield
Trustee



Dom Macchia
Trustee



Sheldon L. Cohen
Trustee



Nancy S. Goroff Ph.D.
Trustee



Lauren Harris
Trustee



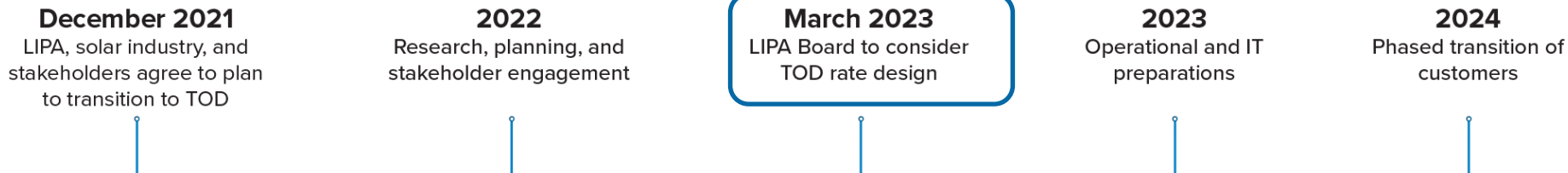
Mili Makhijani, Esq.
Trustee



TIME OF DAY RATE FOR 2024

LIPA IS MOVING TO TIME-OF-DAY RATES IN 2024

- **LIPA will offer a standard Time-of-Day (TOD) rate plan for residential customers in 2024**
- Peak hours are **3 p.m. to 7 p.m. on weekdays**. Electricity will be cheaper “off peak” **88% of the hours of the year** including all day on weekends and holidays.
- LIPA will deploy services and tools to educate customers and help them make the most of the new plans. Customers who try TOD will receive a 1-year **Bill Protection Guarantee** and can switch back to their current rate plan at any time. Customers will be notified 90, 60 and 30 days before transition.
- Shifting electric use during a few peak hours to other times of day results in **cleaner and less expensive** energy use and helps prevent high-cost upgrades to the electric grid (substations, transformers) to meet peak capacity



SAVINGS POTENTIAL

- Over **80% of customers will pay less on time-of-day rates** without changing their routines as most energy is consumed off peak.

Customer Bill Savings on the Time-of-Day Rate and Super Off-Peak Rates

With the modernized TOD Rate, customers who run appliances before 3 p.m. or after 7 p.m. will save money as compared to the Flat Rate. With the optional Super Off-Peak Rate, customers can save even more by running appliances after 10 p.m. and before 6 a.m.

Initial Savings ¹ (Before any Changes to Electric Use)	TOD Rate (Save before 3 p.m. or after 7 p.m.)	Super Off-Peak Rate (Smaller savings before 3 p.m. or after 7 p.m. and larger discounts between 10 p.m. and 6 a.m.)
	Save \$3.50 per month	Save \$5.75 per month
Dishwasher	Save \$0.50 per month	Save \$1.50 per month
Washing machine	Save \$1.75 per month	Save \$4.50 per month
Electric dryer	Save \$2.25 per month	Save \$6.00 per month
Pre-cool home before 3 p.m.	Save \$12.75 per month (in the summer)	Save \$13.75 per month (in the summer)
Pool Pump	Save \$4.00 per month (in the summer)	Save \$6.50 per month (in the summer)
Battery storage optimized use	Save \$40.00 per month	Save \$51.25 per month
Electric vehicle	Save \$43.50 per month	Save \$56.50 per month
Total Savings (including changes)**	Save up to \$91.50 per month (\$108.25 in the summer)	Save up to \$125.50 per month (\$145.75 in the summer)

Note: These estimates are based on average household appliance usage. The typical household already uses most of its electric off-peak, so the "initial savings" is without assuming changes to electric usage. The additional savings estimates for dishwashers, laundry, pool pumps, and electric vehicles assume customers move their appliance usage to the lowest price period. The "initial savings" does not include savings for customers with pool pumps or EVs, as their usage is higher than the typical customer. Pre-cooling and pool pump savings only apply to the summer months. The battery storage example shows the savings available from using residential storage to optimize a TOD rate. LIPA will help every customer estimate their individual savings potential based on their actual usage patterns.

COMPARING TIME-OF-DAY TO FLAT RATE

Most customers save money on TOD.

- On average, customers will save \$3.50 per month.

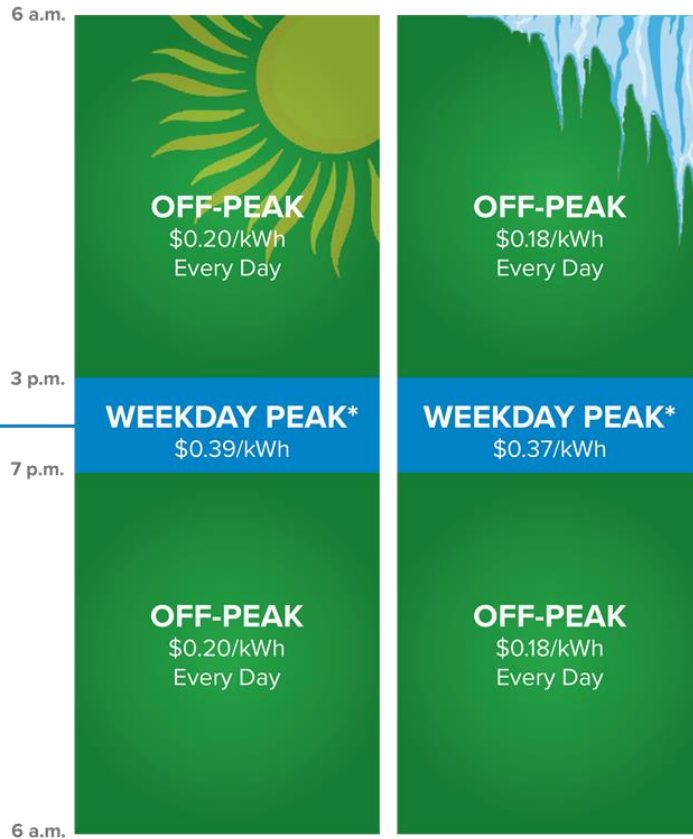
** Weekdays Only
(No Peak Hours on
Weekends and
Federal Holidays)*

- Customers who move a portion of their usage to off-peak times can save more money.

TIME-OF-DAY RATE

Proposed Summer Season
TOD Rates (June 1 - September 30)

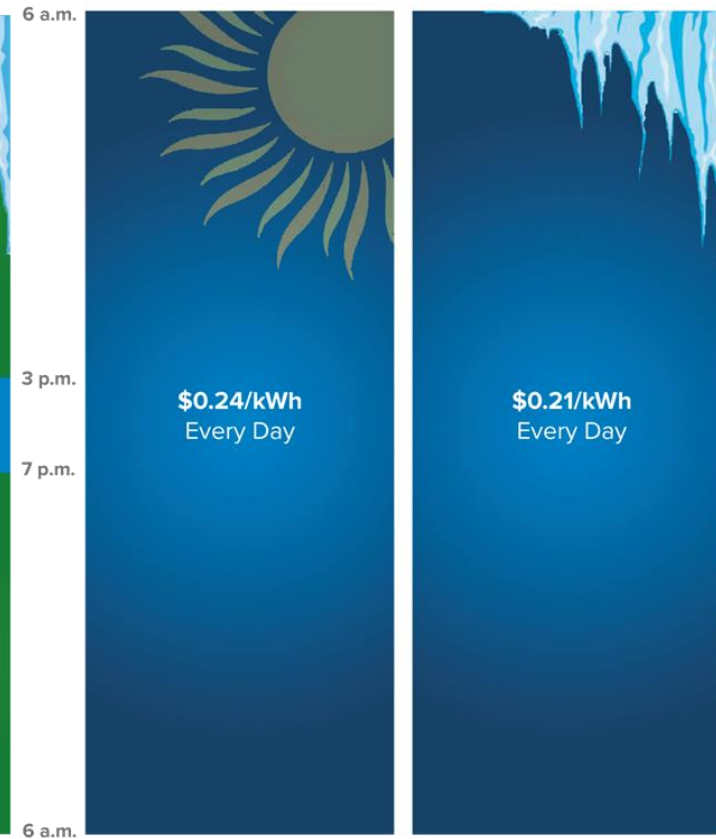
Proposed Non-Summer Season
TOD Rates (October 1 - May 31)



FLAT RATE

Summer Season
Flat Rate (June 1 - September 30)

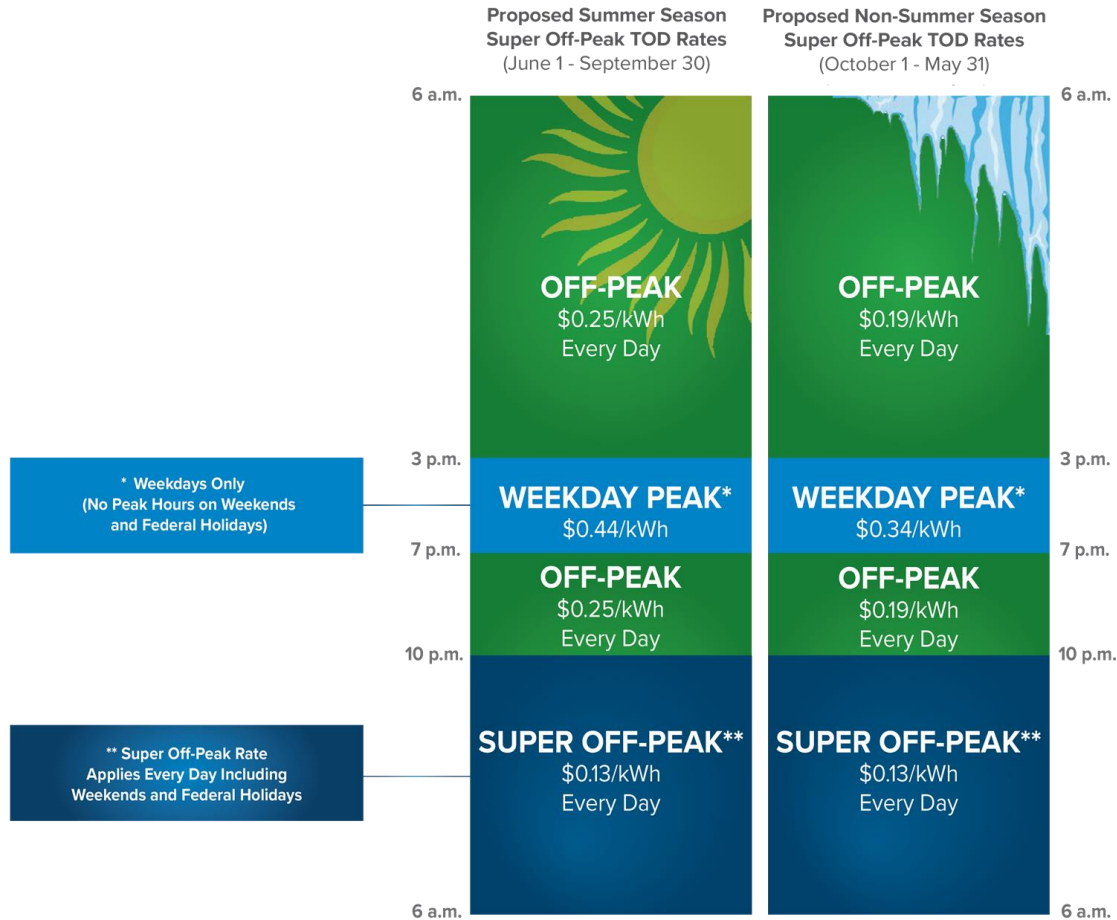
Non-Summer Season
Flat Rate (October 1 - May 31)



**These are the rates that would apply if the program were launched in 2023.*

THE SUPER OFF-PEAK RATE

SUPER OFF-PEAK RATE



Deep discounts overnight.

- “Super off-peak” hours from 10 p.m. to 6 a.m. every day.
- Low super off-peak pricing creates bigger savings for customers who can use more overnight.

**These are the rates that would apply if the program were launched in 2023.*

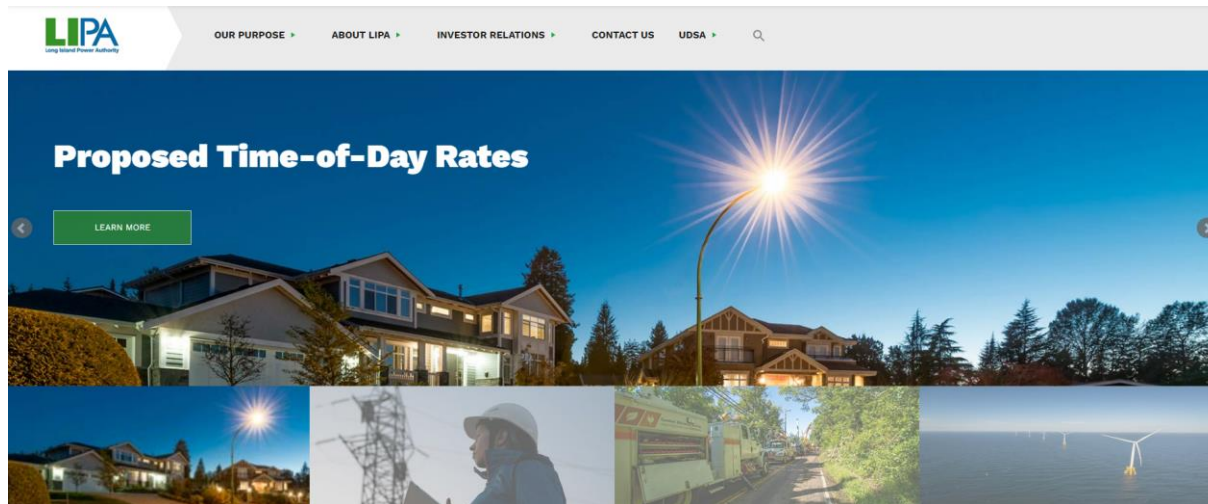
NEXT STEPS

- LIPA held two public hearings on February 21, 2023 and accepted written public comments until February 27
- The proposal is scheduled for consideration at the March 29, 2023 meeting of the LIPA Board of Trustees
 - Consideration by the Board of rate and tariff changes are held in open session and the public is always invited to attend and speak. For more information on how to attend and participate in public hearings and Board meetings, please visit [lipower.org](https://www.lipower.org).

For more information on LIPA's Time-of-Day Rate Proposal:

www.lipower.org/time-of-day/

[Time-of-Day Fact Sheet](#)



FACT SHEET

LIPA's Time-of-Day Rate Proposal for 2024

LIPA is proposing to maximize its standard electric rate for residential customers in 2024 with a new **Time-of-Day (TOD) Rate** to help customers save money and support the transition to clean energy on Long Island and the Blockchain. LIPA is also proposing an optional **Flat Rate** and **Super Off-Peak Rate**.

With the new TOD Rate and Super Off-Peak Rate, customers pay different rates for electricity based on when they use it. Electric rates are higher during weekdays from 3 p.m. to 7 p.m. ("Peak" hours) but lower all other hours of the day and on weekends and holidays ("Off-Peak" and "Super Off-Peak" hours). Customers can save money by moving a portion of their electric usage – like dishwashing or charging electric cars – to off-peak hours. These discounted off-peak rates are available 88% of the hours throughout the year.

Most customers (more than 82 percent) will pay the same or less on the new TOD Rate and Super Off-Peak Rate without changing how or when they use electricity. That is because most customers already consume most of their energy off-peak. On average, customers will save about \$2.50 per month on the TOD Rate and \$5.75 per month on the Super Off-Peak Rate compared to the Flat Rate, without making any changes in their daily routine. **Customers who make small changes in their daily routines can save more, as shown below.** The new time-of-day rates will also make the electric grid cleaner and more efficient.

To help customers transition to the new rate plan, LIPA is presenting a **Bill Protection Guarantee** for a customer's first year on the TOD Rate or Super Off-Peak Rate. If after 12 months a customer's electric bill on the TOD Rate or Super Off-Peak Rate is higher than it would have been under the Flat Rate, LIPA will automatically refund the difference.

Customer Bill Savings on the Time-of-Day Rate and Super Off-Peak Rates

With the modernized TOD Rate, customers who run appliances before 3 p.m. or after 7 p.m. will save money vs. compared to the Flat Rate. With the optional Super Off-Peak Rate, customers can save even more by moving appliances after 10 p.m. and before 6 a.m.

	TOD Rate (Save before 3 p.m. or after 7 p.m.)	Super Off-Peak Rate (Save after 10 p.m. to 6 a.m. and 6 a.m. to 10 p.m.)
Bill Savings*		
Starting in January 2024, savings (vs. Flat Rate)	Save \$1.00 per month	Save \$5.75 per month
Dishwasher	Save \$0.50 per month	Save \$1.00 per month
Washing machines	Save \$0.75 per month	Save \$1.50 per month
Electric dryer	Save \$0.75 per month	Save \$1.50 per month
Free car charge before 3 p.m.	Save \$10.75 per month (in the summer)	Save \$10.75 per month (in the summer)
Pool Pump	Save \$4.00 per month (in the summer)	Save \$6.00 per month (in the summer)
Refrigerator (estimated use)	Save \$0.50 per month	Save \$1.00 per month
Electric vehicles	Save \$40.00 per month	Save \$80.00 per month
Total Savings	Save up to \$57.50 per month (\$50.00 in the summer)	Save up to \$107.50 per month (\$100.00 in the summer)

*These estimates are based on average electricity usage for residential customers. The actual savings will vary based on individual usage patterns. The savings estimates are based on the assumption that customers will move some of their electricity usage to off-peak hours. The savings estimates are based on the assumption that customers will move some of their electricity usage to off-peak hours. The savings estimates are based on the assumption that customers will move some of their electricity usage to off-peak hours.

LEGISLATIVE COMMISSION

NYS LEGISLATIVE COMMISSION UPDATE

- The Legislative Commission on the Future of LIPA has held five regional public hearings. LIPA was invited to testify at two of these hearings
- The Commission has held two Advisory Committee meetings and has also hired legal and consulting advisors
- The Commission is expected to issue a draft report in March 2023
- Additional public hearings will then be held to gather feedback on the draft report
- LIPA continues to provide the Commission with objective research and analysis on relevant topics



Legislative Commission on the
Future of the
Long Island Power Authority



Southampton Public Hearing – January 20, 2023



ROUNDTABLE DISCUSSION

30