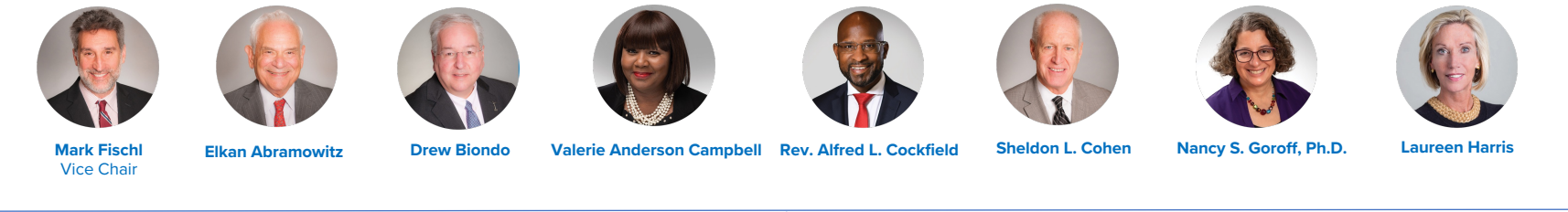
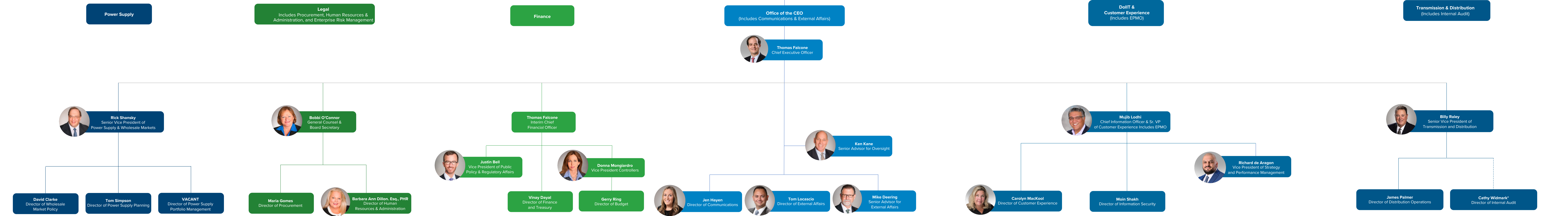


LIPA Organizational Chart (Senior Leadership)
 Updated: 1/20/23

LIPA Board of Trustees



Mark Fischl, Vice Chair; Eikan Abramowitz; Drew Blondo; Valerie Anderson Campbell; Rev. Alfred L. Cockfield; Sheldon L. Cohen; Nancy S. Goroff, Ph.D.; Laureen Harris



Cathy Widmark* reports directly to the Board of Trustees

