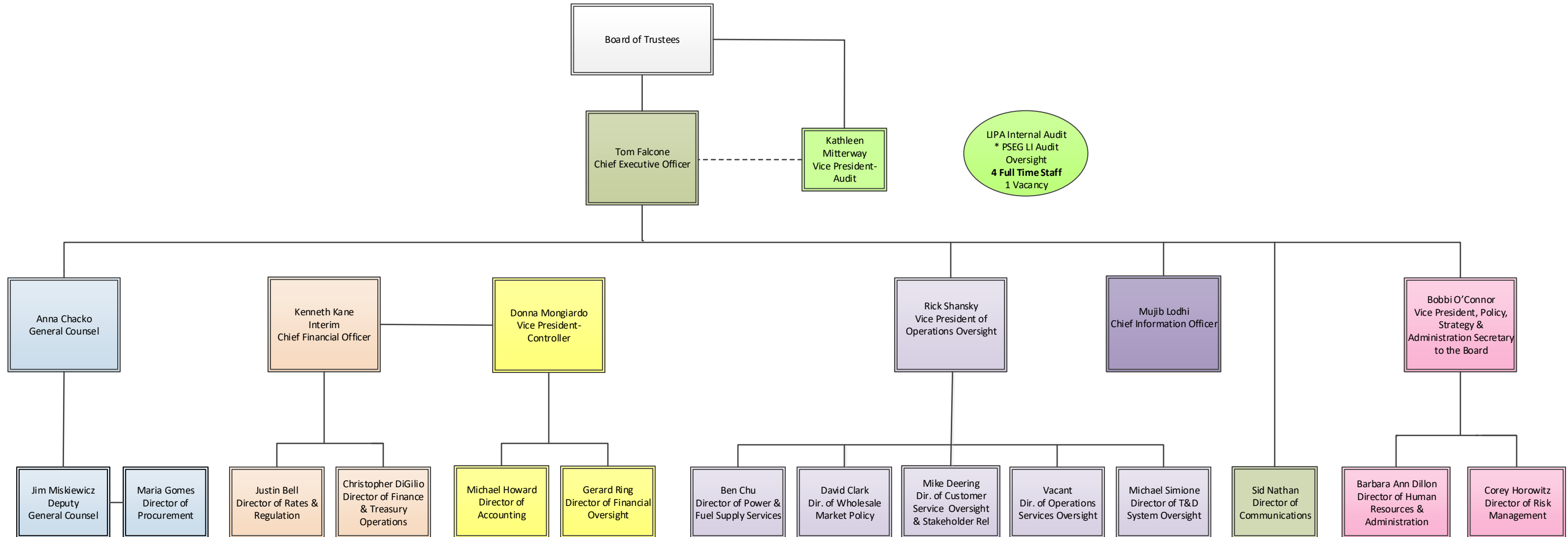


Long Island Power Authority Department Staffing Levels and Responsibilities



LIPA Internal Audit
* PSEG LI Audit Oversight
4 Full Time Staff
1 Vacancy

*Contracts, Environmental, Litigation
*State & Federal Regulatory
* Electric Tariff
* PSEG LI Legal Oversight
*Ethics & Compliance Training
*Policy Compliance
* Third-Party Audit Management
*Procurement

10 Full Time Staff

* Corporate Finance
* Investor Relations
*Electric Tariff
* Financial Policies
*Long Range Financial Planning
* Treasury
*Rate Making/Tariff Oversight

7 Full Time Staff
1 Part Time Staff

*Accounting
* Financial Reporting
* PSEG LI Capital and Operating Budgets Oversight
*PSEG LI Forecasting Oversight
* LIPA Accounts Payable
* Grant Administration
*PSEGLI Affiliate Policies
*PSEGLI Cost Accounting Practices
*LIPA Internal Controls

11 Full Time Staff

* PSEG LI Operations Oversight
* PSEG LI Long Term Resource Planning
* Capital Project Oversight
* Power Supply & Fuel Procurement Oversight
* Procurement Oversight
* Wholesale Markets Policy

10 Full Time Staff
1 Part Time Staff
1 Vacancy

* PSEG LI IT Oversight
* PSEG LI Cyber-Security Oversight
* LIPA Information Systems & Technology

3 Full Time Staff
2 Vacancies
1 Part Time Staff

*Communications
* Community & Government Relations

2 Full Time Staff
1 Vacancy

* Governance & Policy
* Strategic Planning
*Human Resources and Administration
* Executive Office Management
* Enterprise Risk Management
*Commodity Hedging
* Insurance

7 Full Time Staff
2 Part Time Staff

○ = Areas of Responsibility