

1.1 INTRODUCTION

Long Island Power Authority (LIPA) is pursuing a diverse portfolio of resources to provide cost-effective, reliable electric power to its customers on Long Island. In pursuing this goal, LIPA issued its Generation/Transmission Capacity Request for Proposals (RFP) seeking proposals for 250 to 600 megawatts (MW) of baseload supply to help meet Long Island's long-term energy needs. In June 2004, after a detailed review of 14 responses to that RFP, LIPA selected the Caithness Long Island Energy Center (hereinafter referred to as the "project," "proposed facility," or the "Caithness Long Island Energy Center") proposed by Caithness Long Island, LLC (Caithness) as one of the proposed projects to meet baseload needs. In addition to the Caithness project, LIPA is pursuing energy-efficiency initiatives, wind-powered generating facilities (both on- and off-shore), other renewable energy generating measures, and transmission facilities to import electricity. The project, a large, on-Island, baseload generating facility, is a critical component of LIPA's strategy for ensuring sufficient, cost-effective, and reliable electric power to Long Island.

The Caithness Long Island Energy Center would have a capacity of approximately 350 MW and would be a dual-fuel, combined-cycle facility that would be located in the Town of Brookhaven, Long Island, New York. The proposed facility's electrical output would be approximately 300 MW without operating the facility's duct burner and approximately 350 MW with the facility's duct burner in operation.

LIPA, the State Environmental Quality Review Act (SEQRA) lead agency, has made a determination that the proposed project may have a significant adverse impact on the environment. Therefore, this Environmental Impact Statement (EIS) for the proposed Caithness Long Island Energy Center has been prepared in accordance with SEQRA pursuant to Article 8 of the Environmental Conservation Law (ECL §§ 8-0101 et seq.) and its implementing regulations, 6 NYCRR Part 617.

A Draft Environmental Impact Statement (DEIS) was prepared in accordance with SEQRA and the project's Final Scope of Work that was issued by LIPA on January 26, 2005. The Final Scope of Work identified and described the scope of environmental studies to be conducted to analyze the potential environmental impacts of the project. A Draft Scope of Work was distributed by LIPA, as SEQRA lead agency, to the public and to all interested and involved agencies for review and comment in December 2004. A public meeting to receive oral and written comments on the Draft Scope of Work was held on Wednesday January 5, 2005 at 3:00 PM and at 7:00 PM. A copy of the Final Scope of Work is included as Appendix A.

On March 24, 1005, LIPA released the DEIS for public review after finding that the DEIS was adequate in its scope and content for the purpose of commencing public review, as required under SEQRA. LIPA distribute the DEIS to all interested persons, including all involved agencies, various civic and environmental organizations, elected

officials, and all persons who commented on the Draft Scope of Work. The DEIS and its Appendices were also made available at four public libraries and was posted on the LIPA web site. Notice of the availability of the DEIS was also published in the New York State *Environmental Notice Bulletin* and several local newspapers. A public hearing on the DEIS was held at 3:00 PM and 7:00 PM on Wednesday April 20,2005 at the Yaphank Fire Department, 451 main Street, Yaphank, New York 11980. In addition, LIPA held the public comment period open through May 25, 2005 to receive written comments.

This Final Environmental Impact Statement (FEIS) includes a response to comments on the DEIS and text and figures have been modified in response to the comments received.

1.2 PROJECT PURPOSE AND NEED

LIPA's mission is to deliver safe, reliable, and economical electric service to its customers. LIPA is committed to continuously being responsive to its customers' needs, upgrading and enhancing the electric system, and advancing energy efficiency and renewable technology initiatives, thereby fostering economic stability and growth and improving the quality of life within its service territory. To these ends, LIPA adopted its Energy Plan 2004 to 2013 in June 2004. The Energy Plan sets forth five objectives. They are:

- Objective 1: Enhance reliability of the bulk power system,
- Objective 2: Enhance reliability of the distribution system,
- Objective 3: Minimize customer rates and increase customer satisfaction,
- Objective 4: Promote a healthy environment, and
- Objective 5: Position LIPA to respond rapidly to change.

The proposed project would meet three of these objectives. It would enhance the reliability of the power system by increasing generation on the eastern end of the island, where load growth is highest. It would minimize customer rates by more efficiently utilizing fuel. Finally, the proposed project would promote a healthy environment by significantly reducing overall system air emissions.

The need for additional power generating resources in New York and Long Island in particular is addressed in the report, "Power Trends: New York's Success & Unfinished Business," May 2004, prepared by the New York Independent System Operator (NYISO). The NYISO, while acknowledging some success, still predicts a need for additional energy production capacity in order to meet New York's growing energy needs:

- "The NYISO recommends that additional capacity, predominantly in NYC and on Long Island, should be completed in the 2008 and beyond timeframe in order to ensure that the City and Long Island do not fall below minimum reliability requirements. The amount of this capacity should be a minimum of 500 to 1,000 MW each year depending on the pace of demand growth...Long Island is even more critical and may fall below its locational requirements next year. LIPA is installing a number of small generators on an emergency basis for this summer, and has issued RFPs for new resources. However, the urgency of siting additional generation on Long Island as soon as possible cannot be overstated."

- By 2009, Long Island will face a deficit in its Installed Capacity requirements of 276 MW unless new generation is added even with completion of new facilities already under construction.
- “The NYISO recommends now that 2,000 MW of new generation be added by 2009, predominantly in NYC and Long Island, and that 500 to 1,000 MW be approved and constructed annually thereafter depending on the pace of electricity usage.”
- Looking beyond reliability requirements, NYISO explains that a newer, more efficient fleet of generating facilities would “produce orders of magnitude improvement in terms of emissions reductions.”

NYISO has recently issued an updated Power Trends Report (April 2005), which confirms the need for additional capacity on Long Island. In the new report, NYISO predicts that summer peak load on Long Island will grow by nearly 1,000 MW by 2015. NYISO further recognizes the Caithness proposal as one of three projects that LIPA has selected to address “the urgent need for capacity on Long Island.”

In its Energy Plan 2004-2013, LIPA recognizes that “[s]ound energy planning practices call for an appropriate balance between additional generation resources, transmission upgrades and enhancements, and energy efficiency and conservation,” Plan Vol. 1 at 2-1, and that “load growth still requires new and existing fossil fuel units to meet Long Island’s demand for electricity.” The Plan further notes that, even “[a]fter taking into account the reduction [in growth] for [demand-side management], cogeneration, and NYPA and the Long Island Choice Program, LIPA Supply Requirements are projected to grow from 20,567 gigawatt hours (GWh) in 2004 to 23,029 GWh in 2013 while peaks grow from 4,792 MW in 2004 to 5,414 MW in 2013.” Plan Vol. 3 at 4-3.

NYISO requires LIPA to either own or have contracts for generating capacity and other resources to meet peak summer demand, plus a reserve of 18 percent. This reserve requirement is necessary in the event of possible outages of power plants, as well as weather conditions that may be warmer than anticipated, as has been the case in the past summers. Because of Long Island’s geographic distance and separation from the rest of New York State’s electric generating capacity, NYISO requires LIPA to maintain an installed capacity within its service area. The transmission capacity from the major transmission infrastructure in New York State’s electric grid into Long Island is limited. The on-Island locational requirement is 99 percent of the expected summer peak demand. In the Energy Plan, LIPA was projected to meet the NYISO’s locational requirement with a margin in 2005 of 63 MW and showed an increasing need for new capacity between 2006 and 2013 to ensure the reliability of the electric system as the load grows. By 2013, 823 MW of new capacity was projected to be needed to meet LIPA’s requirements.

The LIPA Energy Plan projects that the underlying peak demand for energy on Long Island will grow by approximately 100 MW per year between now and 2012. This is equivalent to a growth rate of about 1.9 percent per year. LIPA has instituted a multi-pronged plan to meet this demand. Energy conservation, or Demand Side Management (DSM) tools, such as the Residential Lighting & Appliances Program, Residential Cool Homes (HVAC) Program, LIPAE_{edge}, and the Peak Reduction Program have been

implemented. As a result of energy savings from these DSM programs, load is still projected to grow by approximately 80 MW per year or 1.6 percent. Thus, additional on-island generation is required to meet the peak demand and the requirements of NYISO.

In planning to meet this need, the Energy Plan 2004 to 2013 details specific short- and long-term resource goals. As part of this plan, LIPA determined it is necessary to contract for power from an on-island generation facility as well as an off-island facility, and/or a transmission line connecting to Long Island. LIPA decided to procure capacity for a period of up to 20 years beginning in summer 2007 through its Generation/Transmission Capacity Request for Proposals. The Caithness Long Island project was selected as one of two projects that best met the objectives of the Energy Plan.

LIPA has also decided to contract with the Neptune Regional Transmission System Cable to bring about 660 MW of off-island power into its service area. In addition, renewable energy generation resources are in the demonstration and planning stages. Wind turbines have been installed on land, and a large offshore wind farm, which would provide about 140 MW of electricity, is in the early permitting phase. A significant fuel cell installation is also in the bidding process.

LIPA monitors its load and supply balance on an ongoing basis. Since the issuance of the LIPA Energy Plan, LIPA has begun implementing many of the steps outlined in the Plan. Over 88 MW of temporary generation has been installed, construction of two 79.9 MW combined cycle units are nearing completion and implementation of the 75 MW demand side management program has begun. While these more than 320 MW of new demand side and supply side resources (about 235 MW of permanent additions) will help meet LIPA's short term needs, more is needed. The temporary generators are slated for removal toward the end of 2007, while load is now projected to grow faster than projected in the LIPA Energy Plan. Overall, after considering the higher than originally projected load growth and the addition of new resources, the need for new supply is now slightly larger than projected in the LIPA Energy Plan

Overall, the Caithness Long Island Energy Center is one part of LIPA's multi-pronged plan to meet the objectives of its Energy Plan for 2004 to 2013 with energy efficiency, renewable energy, and additional state-of-the-art fossil fuel facilities. The project is necessary for the long term reliability of the LIPA electric generation and distribution system. Without this or a similar project, Long Island would face the possibility of energy shortages, leading to possible rolling black-outs and the loss of reliability in the electric system, as well as negative consequences to the Long Island economy.

The Caithness Long Island Energy Center is also consistent with the latest New York State Energy Plan (SEP), dated June 2004. The Caithness Long Island Energy Center would increase the diversity of energy supplies on Long Island and enhance and promote electric competition—a public policy goal in New York State. In all key areas—price, reliability, economic development, adequacy, and environmental impact—the SEP finds that competition in the electricity sector has been beneficial, but greater benefits can be achieved. According to the SEP, “[t]he primary barrier to achieving effective wholesale competition in the energy industries is the lack of adequate resources (electric generation capacity, electricity and natural gas delivery infrastructure, and demand reduction

techniques) in certain areas where they are needed.” The Caithness Long Island Energy Center is consistent with these goals.

The SEP found that, “the State must increase its capacity to generate electricity by siting new, cleaner, state-of-the-art power plants, repowering existing plants, and increasing other alternative sources of electricity generation.” The SEP forecasts that the State must increase its capacity to generate electricity by 5,000 to 7,000 MW during the early years of the planning period.

As such, the SEP sets forth the following policies:

“Plans for new electricity generation that promote or contribute to the development of a competitive market will be consistent with the long-range plans for expansion of the State’s electricity system, as envisioned in the State Energy Plan.”

“The energy policies and long-range planning strategies presented in the SEP are designed to ensure that New York’s energy needs are met by encouraging competition while ensuring fairness and equity, ensuring mobility, ensuring system reliability, and improving the State’s environment” while bringing energy prices “more in-line with other states to compete more effectively for economic opportunities.”

“The pursuit of effective competition, wherever practicable, in the provision of natural gas and electricity services is the policy of the State of New York. Such competition has the potential to reduce energy costs over the long term, increase customer choices and satisfaction, provide economic development advantages, enhance system reliability, promote technological changes and improvements, and improve environmental quality.”
In a competitive market, participants will determine when and where new electric generation or demand reductions are most needed and economically viable.

The Caithness Long Island Energy Center would be consistent with the SEP’s goal of “siting new, cleaner, state-of-the-art power plants”. The Caithness Long Island Energy Center would be a state-of-the-art, combined-cycle power plant, and, once operational, would be one of the cleanest plant on Long Island in terms of overall facility emissions. A combined-cycle plant uses waste heat from a combustion turbine to serve as the heat input to a conventional steam turbine. The “combined-cycle” technology is about 30 percent more efficient than conventional electric generator technologies. Because a combined-cycle plant uses less fuel than either a steam turbine or a gas turbine to generate a kilowatt-hour of electricity, the savings in fuel costs and energy supply are substantial.

The Caithness Long Island Energy Center would also be consistent with the SEP’s goal of developing competitive markets in the provision of electricity services in the State of New York and promoting competitive markets “in certain areas where they are needed”. The facility would provide approximately 300 MWs of electric generating, capacity to the LIPA service area. The need for this additional generating capacity on Long Island is discussed in detail above. In addition to satisfying the need and requirement for additional generating capacity on Long Island, the Caithness Long Island Energy Center would also foster competition in the provision of electricity services on Long Island by improving the diversity of electric supply sources available on Long Island. The

development of the Caithness facility would increase the diversity of ownership of Long Island's baseload generating capacity. Further, development of the Caithness Long Island Energy Center would position Caithness Long Island to compete with other suppliers of electricity in the Long Island and New York State markets via the project's 47 MW "merchant component", which would not be subject to the power purchase agreement proposed to be executed between LIPA and Caithness. Accordingly, the Caithness Long Island Energy Center would "contribute to the development of a competitive market" for electricity by competing for the opportunity to sell the output of its merchant component.

The development of the Caithness Long Island Energy Center would also assist in "ensuring system reliability and improving the State's environment." The project would assist in achieving environmental benefits relative to air quality. As the facility would be a state-of-the-art combined cycle electric generating facility, it would be about 30 percent more efficient than conventional simple cycle electric generator technologies. The savings in fuel would be significant, which results in lower operating costs, the benefit of which would be passed on to LIPA and its customers. As a result, the proposed facility would is expected to be dispatched at a higher capacity factor, enabling it to displace older, less efficient electric generating facilities, which could result in a net environmental benefit for Long Island.

Finally, to the extent that operation of the Caithness Long Island Energy Center displaces output from older, higher emitting electric generating units on Long Island, the operation of the Caithness project would facilitate the opportunity to repower these older existing generating units, another stated goal of the SEP.

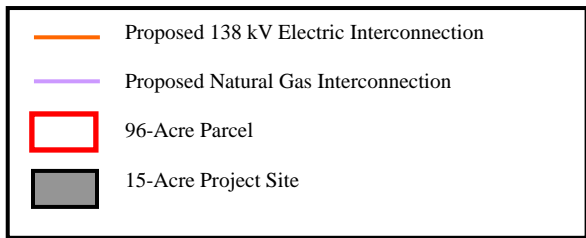
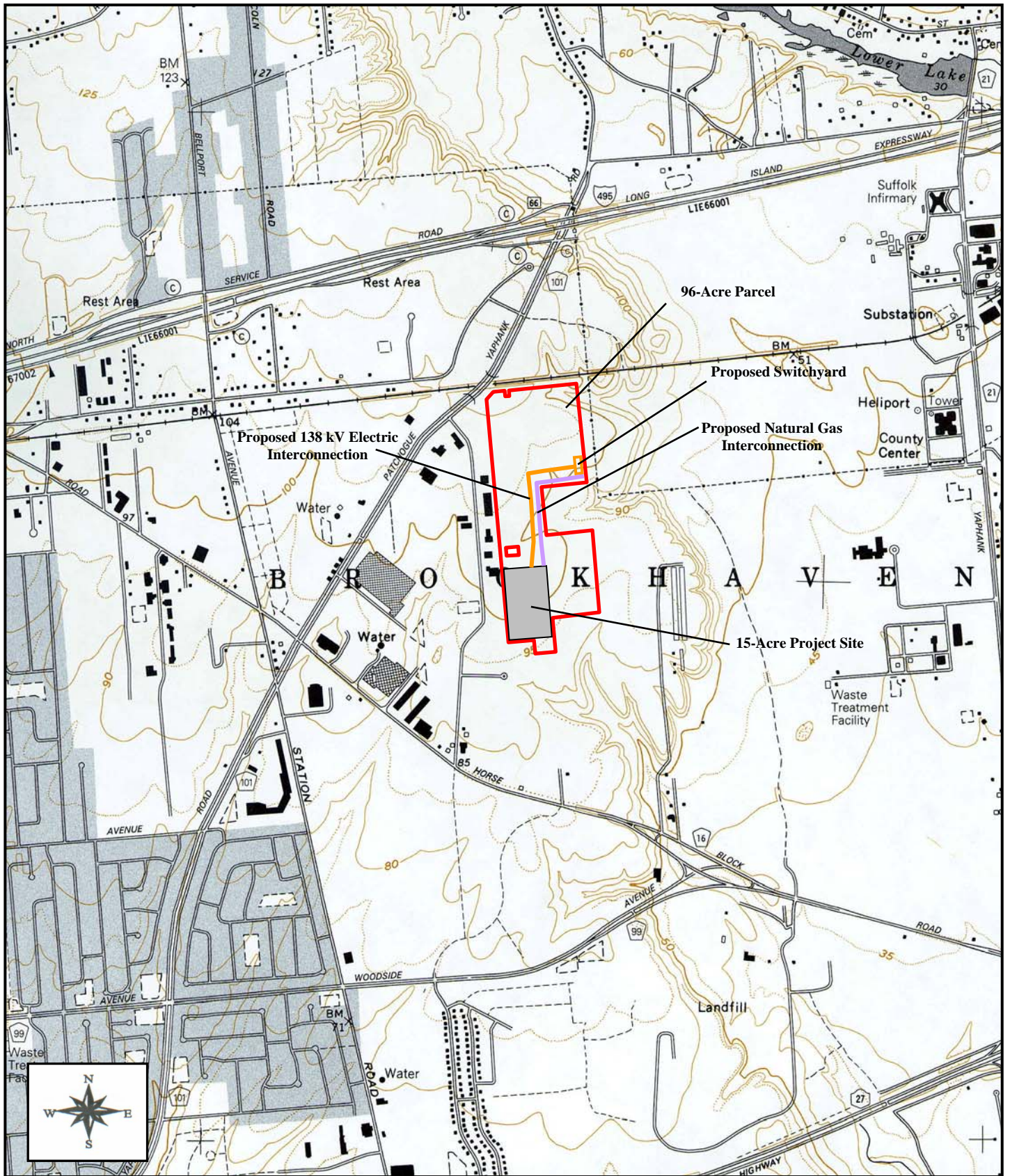
1.3 BRIEF DESCRIPTION OF THE PROPOSED ACTION

The proposed Caithness Long Island Energy Center would be located on approximately 15 acres within the Town of Brookhaven's Empire Development Zone, and is part of a larger 96-acre parcel controlled by Caithness. The 15-acre site is located south of the Sills Road interchange (Exit 66) of the Long Island Expressway (LIE), within the Town of Brookhaven, Long Island, New York. An additional 28 acres within the 96 acres would be temporarily disturbed during construction for materials lay down, equipment storage, and construction parking. Figure 1-1 shows the proposed site boundary on the United States Geological Survey (USGS) 7.5-minute map (Bellport, New York Quadrangle) for the surrounding area.

The site is located east of Old Dock Road and north of Horseblock Road bounded on the north by the Long Island Rail Road (LIRR). Undeveloped land is located to the east of the property and existing light industries are located to the south and west.

Terrain elevations across the 96-acre parcel range from 95 feet (ft) above mean sea level (MSL) to 110 ft above MSL with elevations within the proposed facility location (15-acre site) ranging from 95 ft above MSL to 106 ft above MSL. However, it is anticipated that the project site would be graded to an elevation of 100 ft above MSL.

The proposed facility would utilize a Siemens Westinghouse Power Corporation 501F combustion turbine and would be permitted for year-round baseload operation. Natural gas would be utilized as the primary fuel with provision for low sulfur distillate (0.04 or



Caithness Long Island, LLC
Caithness Long Island Energy Center
Town of Brookhaven, Suffolk County, NY

Figure 1-1. Site Location Map
 Scale 1:24,000

Source: New York State Department of Transportation.
 Bellport Quadrangle, 1991.

less percent sulfur content by weight) use for up to 30 days per year as a back-up fuel. The facility would be constructed in a 1-on-1 configuration with one combustion turbine, a heat recovery steam generator (HRSG), and a single steam turbine. The HRSG would be equipped with a natural gas-fired duct burner. Air-cooled condensing would be employed to (1) minimize water usage, (2) reduce water treatment costs, and (3) eliminate cooling tower plume impacts. Selective catalytic reduction technology (SCR) and an oxidation catalyst would be utilized to control oxides of nitrogen (NO_x) and carbon monoxide (CO) emissions, respectively.

To accommodate short-term operation on low sulfur distillate, the proposed project would include a 750,000-gallon fuel storage tank and associated off-loading facilities, transfer piping, and pump systems. Consistent with the Suffolk County Department of Health Services (SCDHS) requirements, the tank would have a lined retention basin with a capacity of 110 percent of the tank; all piping outside of the basin would be double walled. Fuel transport to the tanks would be via tanker truck and the fuel off-loading facilities would be capable of handling two trucks simultaneously and would also meet SCDHS requirements.

The project site is located within the Sills Industrial Park, in the Town of Brookhaven's L-1 Industrial District, which permits electric generating facilities by special permit issued by the Town Board. The land uses nearby and adjacent to the Caithness Long Island Energy Center site are mainly light industrial, commercial, and undeveloped. Small industries, warehouses, and commercial buildings are located adjacent to the project site's western and southern property boundaries, while undeveloped land is located north and east of the property. The Patchogue-Yaphank Road (County Route 101) interchange with the LIE is located approximately 1,600 feet (0.3 miles) north of the property.

The project would interconnect to the 138-kilovolt (kV) LIPA system within the 96-acre parcel via a new 138 kV switchyard to be constructed on site and adjacent to the existing LIPA 138 kV Holbrook-to-Brookhaven transmission line right-of-way, located approximately 1,500 feet from the project's step-up transformers. It is contemplated that natural gas supply would be provided by a new natural gas pipeline lateral developed by an entity other than LIPA or Caithness.

1.4 SUMMARY OF DISCRETIONARY APPROVALS AND INVOLVED AND INTERESTED AGENCIES

Development and operation of the Caithness Long Island Energy Center may require or involve the following discretionary federal, state, and local regulatory agency notifications, actions, permits and approvals.

United States Environmental Protection Agency (EPA)

- Prevention of Significant Deterioration Permit (PSD)

Long Island Power Authority (LIPA)

- Facility Power Purchase Agreement
- Interconnection Agreement

New York State Department of Environmental Conservation (DEC)

- Part 201 State Air Permit (including Part 231 New Source Review requirements)
- Title IV Acid Rain Permit
- State Pollutant Discharge Elimination System (SPDES) Permit for Storm Water Discharges Associated with Industrial Activities and Process Wastewater Discharge
- Major Oil Storage Facility

New York State Public Service Commission (PSC)

- Section 68 Certificate of Public Convenience and Necessity (as well as an Order for Lightened Regulation)
- Section 69 approval pertaining to issuance of bonds, notes or other forms of indebtedness for periods longer than 12 months

Suffolk County Department of Health Services (SCDHS)

- Article VI Approval for Water Use
- Article VII Approval for Water Pollution Control
- Article XII Approval for Toxic and Hazardous Materials Storage and Handling Controls (delegated by DEC)

Suffolk County Planning Commission

- Advisory Recommendation

Town of Brookhaven Town Board

- Special Permit Approval for Electric Generating Facility
- Variance for Stack Height
- Variance for Building Height

Town of Brookhaven Planning Board

- Site Plan Approval (including tree clearing permit for testing activities)

Lightened Regulation

On or about January 25, 2005, Caithness submitted a petition to the Public Service Commission seeking an order for lightened regulation application to Caithness as a wholesale generator of electricity (Caithness also sought a Certificate of Public Convenience and Necessity pursuant to Section 68 of the Public Service Law). Caithness has sought lightened regulation so that the legal provisions that adhere to it, as a corporation selling electricity at wholesale and not providing retail service, can be made clear.

Separate Environmental Review and Approval for Pipeline Lateral

Alternative arrangements are under consideration for the local transmission of natural gas to the project site, requiring lateral pipeline connections of varying lengths. It is contemplated that the natural gas pipeline lateral would be developed by an entity other than LIPA or Caithness and would require either PSC (Article VII of the Public Service Law) or the Federal Energy Regulatory Commission (FERC) approval. Approval of the natural gas pipeline lateral is not part of this SEQRA review. It would go through its own

separate environmental review and approval process. Nevertheless, this DEIS provides a general overview of the environmental studies that would be undertaken by the pipeline developer as part of that project's environmental review.

1.5 PUBLIC OUTREACH AND PARTICIPATION

1.5.1. INTRODUCTION

The goal is to construct and operate a highly efficient, clean, state-of-the-art power plant which minimizes impacts on surrounding communities. To facilitate this goal, Caithness and LIPA have engaged in a public outreach program to encourage early and meaningful public participation by stakeholders and others interested in issues associated with construction and operation of the proposed facility.

1.5.2. PUBLIC PARTICIPATION PLAN OVERVIEW

The intent of project public outreach efforts is to provide a variety of meaningful public participation opportunities by which public concerns can be identified as early as possible in and throughout the various stages of the SEQRA environmental review and overall project permitting process, to establish communication between stakeholders and Caithness and/or LIPA, and to educate the public as to the specific project and the required SEQRA environmental review and the overall project permitting process.

To ensure a comprehensive outreach and facilitate a readily accessible and understandable method of communicating with the public, Caithness and LIPA have implemented a program designed to encourage and solicit maximum public feedback. These efforts and resources include:

- Convening public meetings at critical milestones in the planning and development and SEQRA environmental review processes;
- Notifying the community about project developments through mailings and advertisements;
- Establishing SEQRA project document repositories throughout the local project area and on LIPA's website (<http://www.lipower.org/projects/caithness.html>) to provide the public with the widest possible access to the Draft SEQRA Scope of Work, Final SEQRA Scope of Work, the DEIS, the FEIS, and all other SEQRA documents created concerning the project;
- Developing a color brochure for general use and distribution that addresses specific project details, plans and benefits;
- Soliciting public input through a Telephone Info Line;
- Creating a project website to provide news about the process, and a direct e-mail link for the Caithness Long Island Energy Center;
- Making presentations to community, environmental, and business organizations with the assistance of LIPA representatives;

- Initiating a proactive newspaper campaign which seeks to inform the public about the proposed Caithness Long Island Energy Center; and
- Conducting briefings for Stakeholder groups and entities that have expressed an interest in the project.

Documentation related to the project public outreach efforts (i.e., public meeting notices, project brochures, meeting log, etc.) is included in Appendix B of this DEIS.

The above public outreach activities will continue throughout the project's SEQRA environmental review and permitting process. During construction, commissioning and operation of the plant, Caithness and LIPA would continue to maintain relationships established with regulatory agency staff, local officials, stakeholders, and interested citizens. During construction and commissioning, Caithness and LIPA would schedule meetings to report on the project's status, and Caithness and LIPA representatives would be available to attend meetings, give presentations, and answer questions as requested.

1.5.3. PUBLIC OUTREACH MEETINGS

During the planning of the Caithness Long Island Energy Center, representatives of Caithness and LIPA met with representatives of the following federal, state and local governments, agencies, and interest groups regarding the proposed facility:

- United State Environmental Protection Agency (EPA), Region 2
- New York State Department of Environmental Conservation (DEC)
- New York State Department of Public Service (DPS)
- New York State Legislature - Senator Ceaser Trunzo, Assemblyman Paul D. Tonko, Assemblywoman Patricia Eddington, Assemblyman Steve Englebright
- Suffolk County Legislature - Legislators Peter O'Leary, Dan Losquadro, and Andrew Crecca
- Suffolk County Office of the County Executive
- Suffolk County Department of Health Services
- Suffolk County Department of Public Works
- Town of Brookhaven Office of the Supervisor
- Town of Brookhaven Office of the Assessor
- Town of Brookhaven Department of Planning, Environment and Land Management
- Town of Brookhaven Fire Marshall
- Town of Brookhaven Department of Public Safety
- Town of Brookhaven Town Council – Councilmen Steve Fiore Rosenfeld and James Tullo
- Long Island Regional Planning Board
- Yaphank Volunteer Fire District
- South Country School District
- Bellport Hagerman East Patchogue Alliance

- Brookhaven Village Association
- Long Island Midsuffolk Business Action
- Long Island Association
- Long Island Business Development Council
- Neighborhood Network
- Natural Resources Defense Council
- Renewable Energy Long Island
- Sustainable Energy Alliance Long Island
- Long Island Pine Barrens Society
- Sills Industrial Association
- Long Island Newsday
- Suffolk Life
- Long Island Business News
- Cablevision
- Oil Heat Institute of Long Island
- Sills Industrial Park Association
- Yaphank Civic Association
- Yaphank Presbyterian Church
- Yaphank Taxpayers Association
- Bellport Chapter of Commerce
- Hauppauge Industrial Association
- Affiliated Brookhaven Civic Organization (ABC)
- Medford Civic Association
- Suffolk County Police Department

As indicated previously, Caithness and LIPA representatives will be available to attend meetings, give presentations, and answer questions as requested. *