

4.1 INTRODUCTION

This chapter addresses local community service demands anticipated for the project and identifies the service providers that are currently responsible for providing services to the project site. These services include police protection, fire, and emergency medical services (EMS). The ability of these providers to serve the proposed facility, either alone, or in conjunction with a similar service provider is assessed. Additionally, the chapter provides an inventory of community facilities (schools, hospitals, religious facilities) located within a one-mile radius of the project site to assess the potential impacts, if any, of the proposed Caithness Bellport Energy Center on these facilities.

4.2 LOCAL SERVICE PROVIDERS

Local service providers, including police protection, fire, and EMS, that currently serve the project site are discussed in the following sections. Potential impacts on service providers that may occur as a result of the development of the proposed project are also assessed. For the purposes of this assessment, an adverse impact would occur if the ability of a local service provider to offer adequate services to the community were significantly impaired by the proposed project.

4.2.1. POLICE SERVICES

Police protection for the project site is provided by Suffolk County Police Department Precinct #6 (based in Coram). Presently, the Suffolk Police Department provides full police protection for approximately 1.4 million citizens within the unincorporated areas within the Towns of Babylon, Brookhaven, Huntington, Islip and Smithtown. The project site is located within the unincorporated area of the Town of Brookhaven. Police department operations in 2003 included a total of 470,125 responses ranging from emergency medical medivac missions and marine search and rescue missions, to assisting traffic accident victims and issuance of summonses. Approximately 120,000 calls for services were received within Precinct #6.¹

The Caithness Bellport Energy Center project is expected to generate 22 to 25 permanent operations jobs. Considering a worst case in which the 25 permanent employment positions required by the project were filled by workers from outside the current service area of the Suffolk County Police Department, the influx of project workers would represent a less than 0.002 percent increase in the population currently served by the department. Accordingly, it is anticipated that any increase in the demand for police services resulting from operation of the project would be negligible. This conclusion is strengthened by the fact that the proposed project would have private security, thereby requiring minimal to no police services.

¹ Suffolk County Police Department, Suffolk County 2005 Annual Budget Request

Caithness requested the input of the Suffolk County Police Department under letter dated December 17, 2004 (see Appendix D). The letter provided a brief description of the project and its proposed location and requested the comments of the department regarding potential impacts on police services that may occur as a result of the development of the proposed power facility. A response has not been received from the Suffolk County Police Department as of the date of publication of this DEIS.

4.2.2. FIRE AND EMERGENCY MEDICAL SERVICES

Presently, the Suffolk County Department of Fire, Rescue and Emergency Services (FRES) serves 1.4 million citizens, with 109 fire departments, 29 EMS agencies, and approximately 10,500 fire and EMS responders.² The 96-acre parcel is located within two local fire districts. The Yaphank Volunteer Fire District provides fire protection for the 15-acre project site. This fire district also provides EMS response. The project's proposed construction laydown area and the proposed switchyard would be located within the Brookhaven Fire District. EMS responses within the Brookhaven Fire District are provided by South Country Ambulance. These Fire and EMS service providers operate under the umbrella of the Suffolk County FRES.

A 750,000-gallon raw water and fire protection storage tank on-site would meet the proposed facility's firewater requirements in the unlikely event of a fire without relying on the local water distribution system. At the proposed switchyard, there would be circuit breakers but no power transformers. Accordingly, there would be no hazardous or flammable materials located within the switchyard and fire is not considered likely to occur in the switchyard.

Because the electric generating facility's primary structures would be located within the Yaphank Fire District, the Yaphank Fire District and the Town of Brookhaven Fire Marshall were consulted regarding emergency planning and fire protection requirements for the project during project pre-application meetings held in August and December of 2004. No concerns were raised during the meetings regarding the ability of the service providers to provide adequate emergency response services to the project. Discussions at the meetings focused on the status of the project, proposed fire suppression devices and requirements, vehicular access to the site, and community outreach efforts. As a follow-up to the meeting with the Town of Brookhaven Fire Marshall, a letter was sent to Joseph S. Sauerwein, Chief Fire Marshall for the Town of Brookhaven, summarizing the proposed configuration of the back-up systems that would provide fire suppression water at the project and the plan for fire training of facility personnel. An October 25, 2004 response from the Chief Fire Marshall indicated that the project design components were acceptable within the parameters of meeting all National Fire Protection Association (NFPA), state, and local requirements. A copy of the letter to Chief Fire Marshall Sauerwein and his October 25th response are included in Appendix B.

² Suffolk County Department of Fire, Rescue, and Emergency Services at: <http://www.co.suffolk.ny.us/webtemp1.cfm?dept=5&ID=147>

In addition to these meetings, the input of the Suffolk County FRES was requested in letters dated December 17, 2004 and January 10, 2005 with respect to whether there would be significant impacts to fire and emergency services as a result of the operation of the project. The letter provided a brief description of the project and its proposed location and requested the comments of the department regarding potential impacts on fire and emergency medical services that may occur as a result of the development of the proposed power facility. A response from the Suffolk County FRES, dated December 23, 2004, was received, and it requested additional information to clarify the fire districts that serve the project site. The requested additional information was provided in a letter dated January 10, 2005. No further correspondence has been received from Suffolk County FRES as of the date of publication of this FEIS.

It is not expected that the project would result in significant adverse impacts to fire and emergency services. Moreover, as indicated to the Town of Brookhaven Fire Marshall, the plant's permanent employees would be trained as an on-site fire brigade and would work cooperatively with the local fire department, to function as the first line of defense in the event of a fire at the proposed plant. As part of this training effort, a safety orientation program and fire response plan would be in place during project operation to reduce the likelihood of the need for emergency services. Finally, prior to the commencement of project operation, an Emergency Response Plan and comprehensive security plan would be developed to support operational activity at the site. The security and emergency response plans will be provided to the Suffolk County Police Department and the Suffolk County FRES for review. Facility site security and operational personnel would be equipped with communication equipment to maintain contact with management personnel and/or the Suffolk County Police Department and the Suffolk County FRES.

4.3 OTHER COMMUNITY RESOURCES

An inventory of community facilities (schools, hospitals, religious facilities, and police, fire, and emergency services) has been taken within a one-mile radius of the project site to assess the potential impacts, if any, of the proposed Caithness Long Island Energy Center on these facilities. The facilities identified by the inventory are illustrated on Figure 4-1.

4.3.1. SCHOOLS

Educational facilities established within one-mile of the project site include the following:

- New Interdisciplinary School
430 Sills Rd
Yaphank, NY 11980
- Developmental Disabilities Institute-School for Autistic Children
1 Scouting Blvd
Medford, NY 11763

4.3.2. HOUSES OF WORSHIP

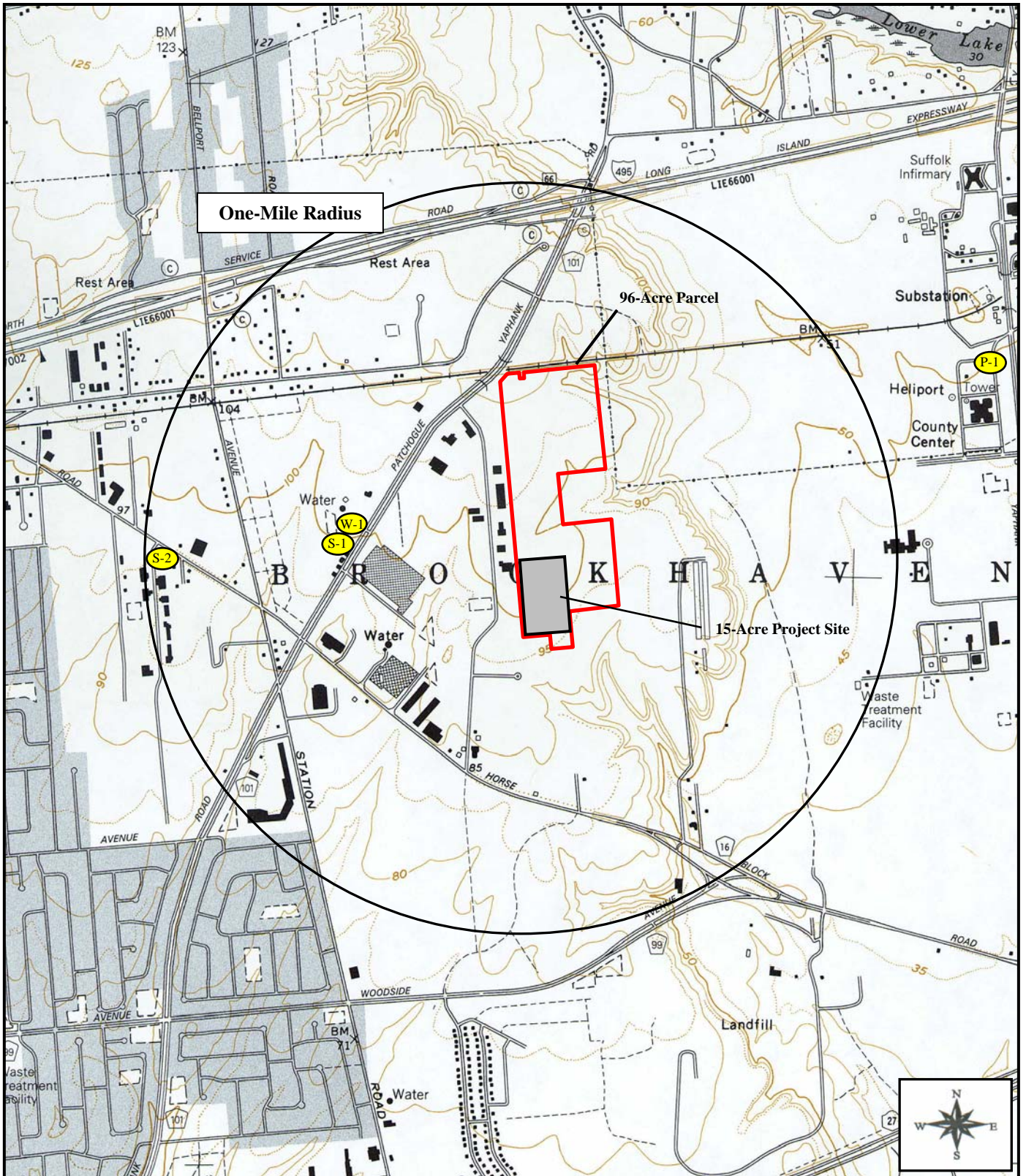
Houses of worship located within one-mile of the project site are limited to the Calvary Full Gospel Assembly located at 97 Patchogue Yaphank Rd.

4.3.3. HOSPITALS

There are no hospitals or medical centers within the one-mile radius of the project site. The Brookhaven Memorial Hospital in Patchogue is approximately three miles southwest of the site. The John J. Foley Skilled Nursing Facility in Yaphank is located approximately two miles to the east of the site.

4.3.4. POTENTIAL IMPACTS TO OTHER COMMUNITY RESOURCES

The Caithness Long Island Energy Center is not expected to significantly adversely impact the community facilities identified above. Due to the limited number of operational employees, the proposed facility would not result in the placement of a significant number of additional students in local schools or impact the ability of local religious institutions to serve their community. Nor would emissions from the proposed facility adversely impact community facilities. As indicated in Chapter 9.0, "Air Quality," the results of air quality modeling analyses indicate that the maximum air quality concentrations calculated at all sensitive receptors (including community facilities) located within several kilometers of the proposed facility would be well below the EPA-defined significant impact levels for all applicable standards and would not cause any violations of National Ambient Air Quality Standards (NAAQS) (see Chapter 9.0, "Air Quality"). Further, as detailed in the project's noise impact analysis included as Chapter 10.0, "Noise," of this FEIS, estimated increases in late night noise levels in the project area as a result of the proposed facility operation would be well below the recommended New York State Department of Environmental Conservation's significance level of 6 decibels A-weighted (see Chapter 10, "Noise," for a definition of noise parameters). Accordingly, no significant adverse impacts are expected to occur. *



96-Acre Parcel
 15-Acre Project Site

Schools
S-1 New Interdisciplinary School
S-2 Developmental Disabilities Institute-School for Autistic Children
Houses of Worship
W-1 Calvary Full Gospel Assembly
Local Service Providers
P-1 Suffolk County Police Department

Caithness Long Island, LLC
Caithness Long Island Energy Center
Town of Brookhaven, Suffolk County, NY.

Figure 4-1. Community Facilities within One Mile of Site Location
 Scale 1:24,000

Source: New York State Department of Transportation.
 Bellport Quadrangle, 1991.