

1. SCOPE

1.1 This standard covers the Long Island Power Authority (LIPA) specifications for the attachment, by a consumer or his contractor, of decorative fixtures to overhead electric facilities.

2. DISTRICTS

2.1 This standard is applicable to all districts.

3. PROCEDURE

3.1 Since the majority of poles are jointly used or jointly owned with the telephone Company, it is necessary that sufficient prior notice is received regarding proposed attachments, so that both companies concerned can coordinate the field inspection.

3.2 Instructions for internal Long Island Power Authority procedures are under separate memorandum, "Procedure for Attachment of Decorative Fixtures to Long Island Power Authority Overhead Facilities".

3.3 The Long Island Power Authority is released from any responsibility for accidents or liability resulting from the attachment of Consumer equipment in accordance with the written agreement between Contractor and Long Island Power Authority as stipulated in "Application for Permission to Attach to or use Poles located in public streets or Public Places" and "Consent" forms.

3.4 Permission for attachments to poles on State Highways will not be cleared until the applicant has obtained a signed permit from the State of New York Department of Public Works as required by Article III, Section 52 of the State Highway Law.

4. ATTACHMENT SPECIFICATIONS FOR CONSUMER OR HIS CONTRACTOR

4.1 Attachments to maintain minimum clearance over center line of road, sidewalk or driveway as per National Electrical Safety Code or local ordinance.

4.2 Support attachment on poles should clear street lighting duplex, and street lighting fixture, minimum 4", where street light fixtures exist on pole. If necessary, the support at the pole must be horizontally blocked out from the pole with wooden blocks to obtain this clearance.

4.3 On poles or structures with Long Island Power Authority or consumer owned conduit running down the face of the pole support attachments must be horizontally blocked out from the pole to clear conduits.

4.4 Attachments to be made by a qualified electrician.

APPROVED BY 	REVISION 	MISC. LIGHTING AND ATTACHMENTS	CONSTRUCTION STANDARD <i>DRAWN BY AH</i>		
DATE 10/22/03	8. 10/03 GENERAL REVISION	ATTACHMENT OF DECORATIVE FIXTURES TO OVERHEAD FACILITIES	NUMBER	SHEET No	REV
LONG ISLAND POWER AUTHORITY <i>prepared by</i> KEYSpan ENERGY CORPORATION			3401	1 of 9	8

4.5 Where joint facilities with other companies exist on the pole or structure, permission must also be obtained by applicant from these companies for the attachment.

4.6 No attachment of a decorative frame or banner directly on the pole or structure will be permitted where their presence would create a hazard to our Line or Service personnel. No attachment shall be made within four feet of primary conductors and a minimum of 16" from any Long Island Power Authority hardware or secondary conductors.

All attachments of low voltage consumer's feed wires on Long Island Power Authority poles shall be made by means of approved type 600 Volt insulators and secured thereto by insulated wire of same size as the conductor and be installed above communication conductors (or cable) and on street side of pole and shall conform with the NESC with regard to clearances and installation.

4.7 Customer's 600 Volt insulated feed wires shall be minimum of #8 copper (or equivalent) wire in good condition. Provisions shall be made for a 120 Volt, 15 Amp, fuse plug in weatherproof socket (Leviton Cat. #57 or equivalent) in the hot leg of the 2/c #14 (color coded neutral) customers supply cable after it exits from the vertical mounted conduit or molding between the decorative lighting frame and the service feed wires. Fuse shall not be installed until after LIPA energizes customer's 2/c feed cable.

4.8 Customer's feed wires shall be maintained at a minimum of two feet clearance from Long Island Power Authority service drops to building. If customer attaches feed conductors to face of buildings, conductors shall clear the Long Island Power Authority service attachments by a minimum of two feet and are to be firmly attached to each building so that there is no possibility of contact with Long Island Power Authority conductors due to falling wires.

4.9 Decorative frame construction or ornaments to be light in weight. Maximum 160 pounds is acceptable provided the ornament's design produces no more than 5 pounds per square foot wind resistance for total surface exposure.

4.10 Decorative fixtures supported on strand wires across sidewalks or highways and under Long Island Power Authority facilities must have 600 Volt insulators, installed in the supporting strands. Supporting strand to be securely attached to poles by eye screw, drive hook, or wrap around method. (see detail "A", sheet 4 if conduit exists).

4.11 At time of expiration (agreed removal date) all decorative fixtures and associated hardware and material shall be removed from all poles. The only exception may be on metallic poles where only the vertical member of the mounting brackets (strapped to metallic poles) may be left remaining.

REVISION	MISC. LIGHTING AND ATTACHMENTS	CONSTRUCTION STANDARD		
8. 10/03: GENERAL REVISION		DRAWN BY AH		
LONG ISLAND POWER AUTHORITY prepared by KEYSpan ENERGY CORPORATION	ATTACHMENT OF DECORATIVE FIXTURES TO OVERHEAD FACILITIES	NUMBER	SHEET No	REV
		3401	2 of 9	8

4.12 The attachment of decorative frames to wood poles are to be made with staples; a single hole may be drilled (within the confined area indicated as shaded) where necessary. On metallic poles or standards, stainless steel straps or bands are to be used. No drilling of holes is permitted on metallic poles or standards.

4.13 Metal conduit switch boxes and junction boxes when used, shall be interconnected to neutral and effectively grounded by a driven ground:

4.14 Where feed wires are suspended from building, signs, fire escapes, etc., the method of attachment must be approved by the building superintendent.

4.15 No decorative lighting, banner or consumer feed wires to cross under Long Island Power Authority facilities in mid span, without at least 2 feet of clearance.

4.16 All loose ends of feed wires to be securely taped.

4.17 No decorative fixture or banner is to be suspended from LIPA owned overhead street lights, crossarms, or hardware and be dependent on them for support.

4.18 Strings of laurel or evergreen entwined among decorative lights or feed wires must have non-metallic supports.

4.19 For individual pole-mounted type decorations, the Customer's electrician shall install the 2/c #14 supply cable under/or in HDPE rigid conduit or hi-impact PVC half round molding vertically on the pole. 3' of lead wire is to be provided above the conduit; staples to be used to secure conduit or molding to the pole face as required. Separation between vertical run and joint use equipment shall be at least 2". Contractor or customers electrician shall place decorative fixtures in service (after LIPA makes connection to LIPA's secondary by making connection through fuse to customer's then energized 2/c supply cable). Tape all connections.

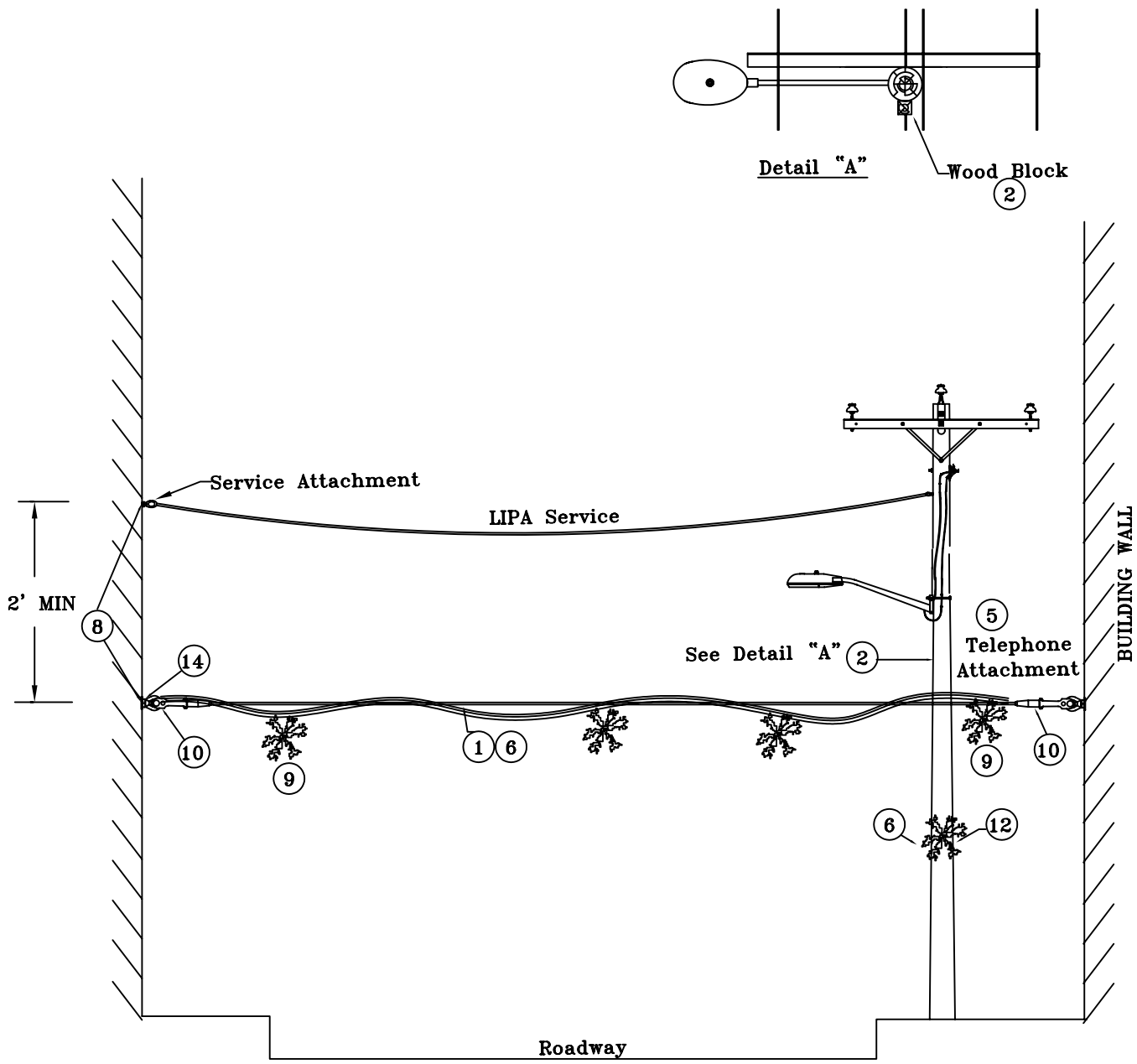
4.20 Poles with telephone terminal boxes cannot be used for electric meter installations. Decorative fixtures shall not be installed on primary riser poles, switch poles or capacitor bank poles.

4.21 Attachment to consist of banner (maximum weight 25 pounds,) made of non-electrical conducting material, suspended by non-metallic rope securely tied with no loose ends. Banner to be ventilated if cross-sectional area exceeds 75 square feet.

4.22 Banner supports at poles to be made at locations specified for individual cases.

4.23 In the event the suggested maximum weight of 25 pounds is exceeded, temporary guying may be required to maintain our facilities.

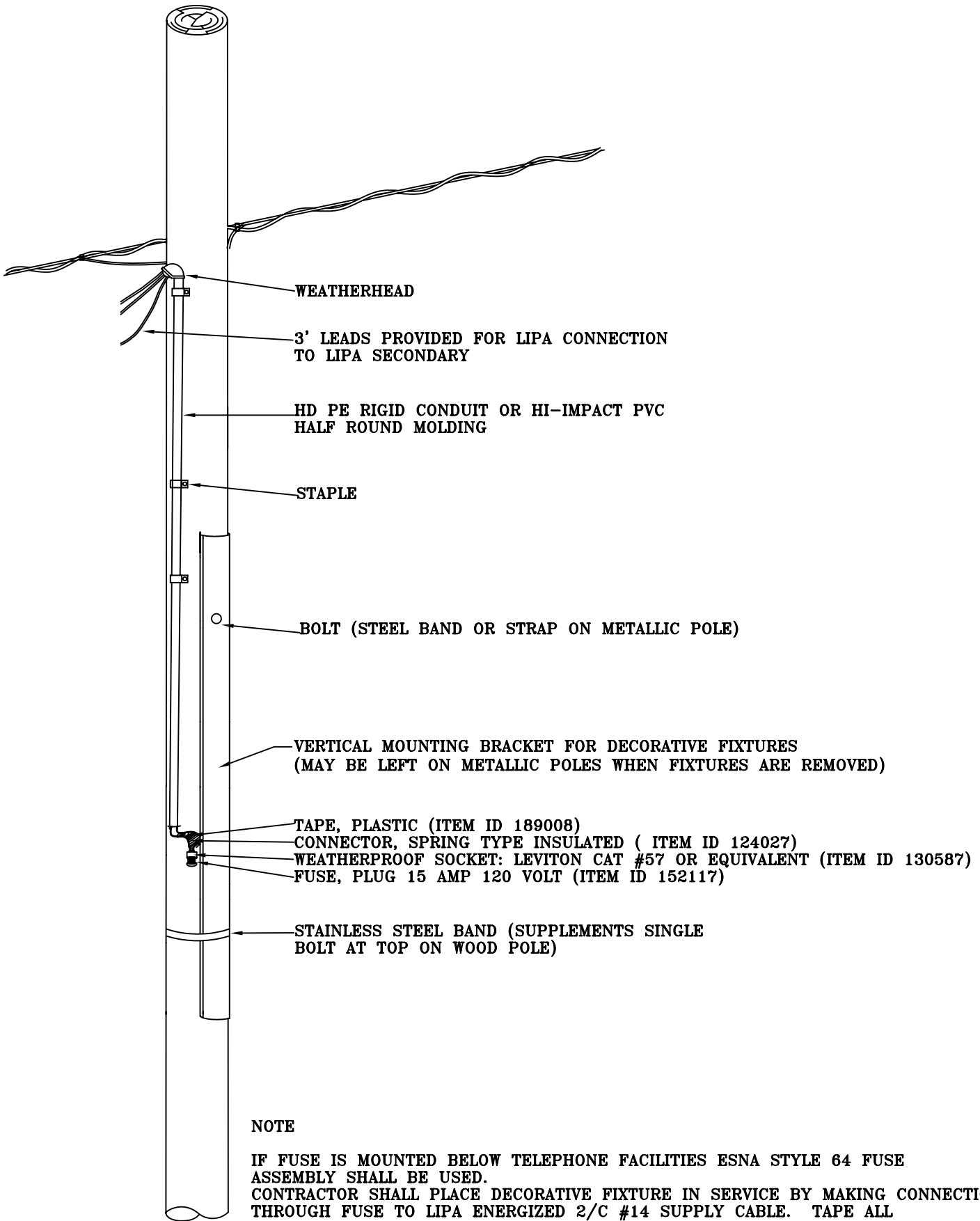
REVISION	MISC. LIGHTING AND ATTACHMENTS	CONSTRUCTION STANDARD		
8. 10/03: GENERAL REVISION		<i>DRAWN BY AH</i>		
LONG ISLAND POWER AUTHORITY prepared by KEYSpan ENERGY CORPORATION		ATTACHMENT OF DECORATIVE FIXTURES TO OVERHEAD FACILITIES	NUMBER	SHEET No
		3401	3 of 9	8



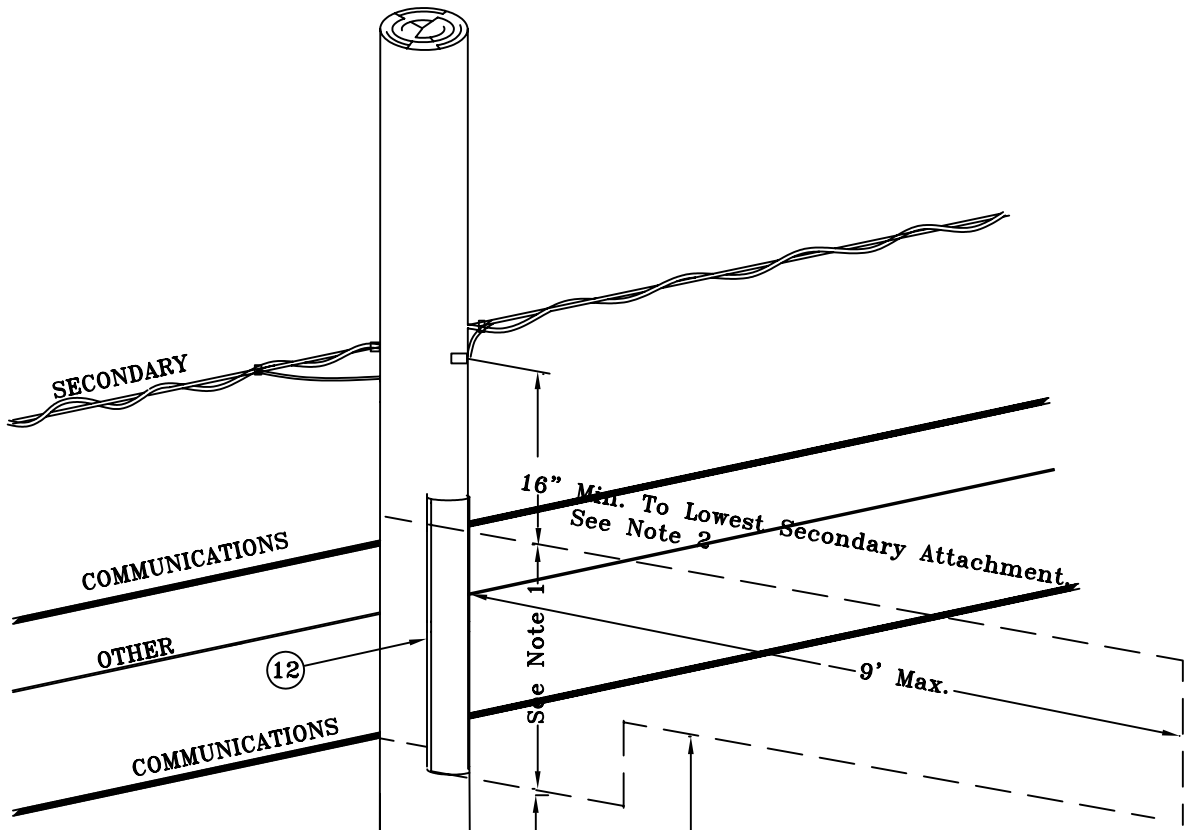
NOTES:

NUMBERS ON SKETCH REFER TO SUB PARAGRAPHS UNDER ITEM 4 SHEETS 1-3

REVISION	8. 10/03: GENERAL REVISION	MISC. LIGHTING AND ATTACHMENTS ATTACHMENT OF DECORATIVE FIXTURES TO OVERHEAD FACILITIES	CONSTRUCTION STANDARD <i>DRAWN BY AH</i>		
			NUMBER	SHEET No	REV
LONG ISLAND POWER AUTHORITY <i>prepared by</i> KEYSpan ENERGY CORPORATION			3401	5 of 9	8



REVISION	8. 10/03: GENERAL REVISION	MISC. LIGHTING AND ATTACHMENTS	CONSTRUCTION STANDARD		
		ATTACHMENT OF DECORATIVE FIXTURES TO OVERHEAD FACILITIES	<i>DRAWN BY AH</i>		
		INDIVIDUALLY MOUNTED DECORATIONS	NUMBER	SHEET No	REV
LONG ISLAND POWER AUTHORITY <i>prepared by</i> KEYSPAN ENERGY CORPORATION			3401	6 of 9	8



NOTES:

1. VERTICAL HEIGHT IS LIMITED ONLY BY THE UNOCCUPIED SPACE ON POLE— THE TWO CRITERIA BEING THE 16" MINIMUM BELOW SECONDARY; AND MINIMUMS FROM SIDEWALK OR ROADWAY SURFACE, AS TAKEN FROM THE LATEST REVISION OF NESC AND AS SHOWN ON CS-2031.
2. WHERE SECONDARY DOES NOT EXIST, A 4' MINIMUM CLEARANCE TO THE LOWEST PRIMARY CONDUCTOR SHALL BE MAINTAINED.

Minimum Above Sidewalk
See CS-2031

Above Road Surface
See CS-2031

REVISION

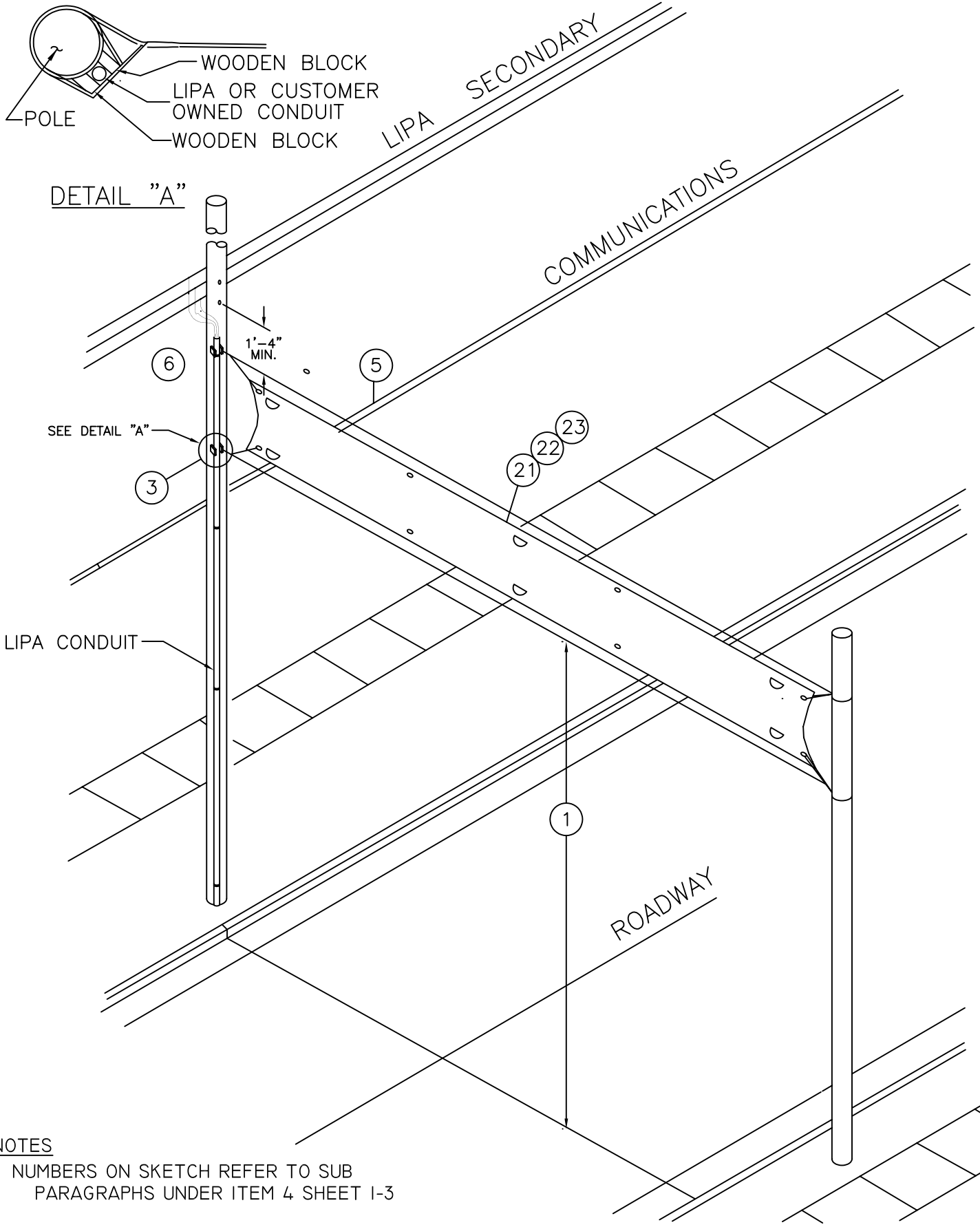
8. 10/03:
GENERAL REVISION

MISC. LIGHTING AND ATTACHMENTS
ATTACHMENT OF DECORATIVE FIXTURES
TO OVERHEAD FACILITIES
—INDIVIDUALLY MOUNTED—

CONSTRUCTION STANDARD
DRAWN BY AH


NUMBER	SHEET No	REV
--------	----------	-----

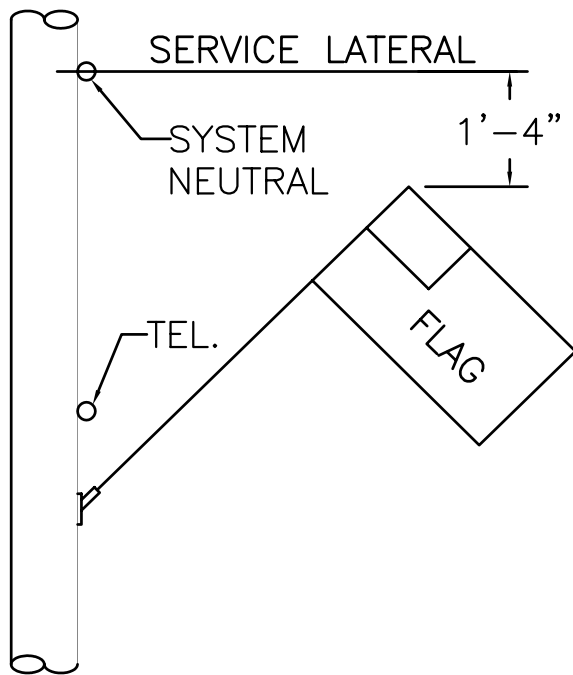
3401	7 of 9	8
------	--------	---



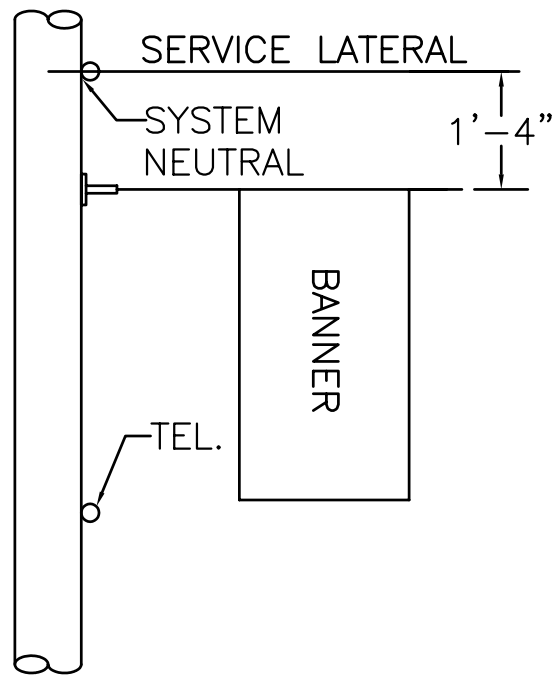
NOTES

NUMBERS ON SKETCH REFER TO SUB
PARAGRAPHS UNDER ITEM 4 SHEET I-3

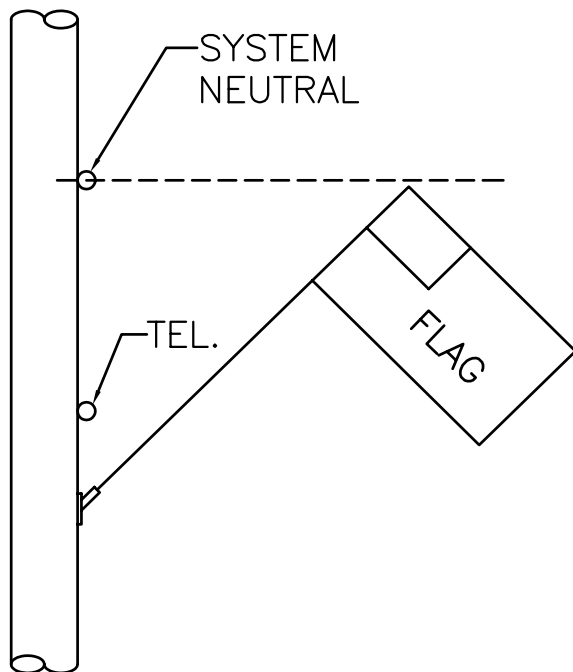
REVISION 	<p>8. 10/03: GENERAL REVISION</p>	<p>MISC. LIGHTING AND ATTACHMENTS ATTACHMENT OF DECORATIVE FIXTURES TO OVERHEAD FACILITIES -BANNERS-</p>	CONSTRUCTION STANDARD <i>DRAWN BY AH</i>			
LONG ISLAND POWER AUTHORITY <i>prepared by</i> KEYSpan ENERGY CORPORATION			NUMBER	SHEET No	REV	3401



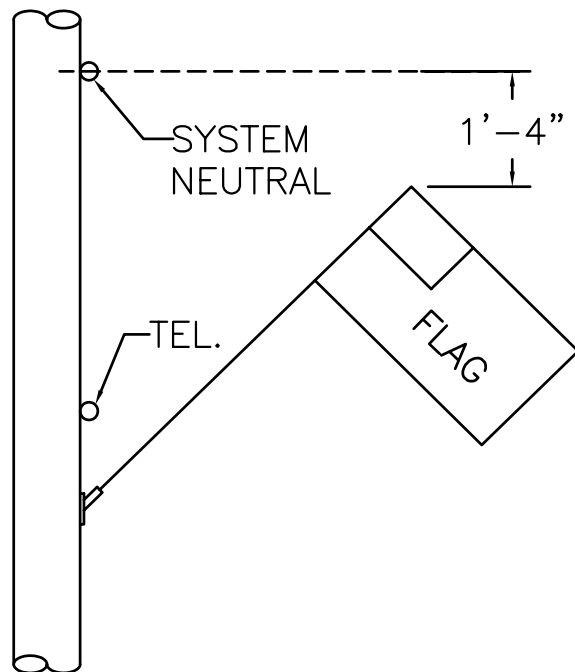
FLAG BELOW SECONDARY OR SERVICE LATERAL



BANNER ALL CONDITIONS



FLAGS WITH NON-METALLIC POLE



FLAGS WITH METALLIC POLE

REVISION

8. 10/03:
GENERAL REVISION

LONG ISLAND POWER AUTHORITY
prepared by KEYSpan ENERGY CORPORATION

MISC. LIGHTING AND ATTACHMENTS
ATTACHMENT OF DECORATIVE FIXTURES
TO OVERHEAD FACILITIES
FLAGS AND BANNERS

CONSTRUCTION STANDARD
DRAWN BY AB

NUMBER	SHEET No	REV
--------	----------	-----

3401	9 of 9	8
------	--------	---