

Lizardos Engineering Associates Professionals Demand Professionals

Lizardos Engineering Associates (LEA), a Long Island-based engineering firm has been in the business of designing mechanical and electrical systems for commercial customers since 1965. Their use of innovative and cost-effective designs has earned them a well-deserved reputation. Projects are completed on time and under budget.

LEA interacts regularly with LIPA, to provide clients with the best value possible. When LEA thinks value, they think of LIPA's Commercial Construction Program.

Through the program, clients can benefit from hundreds of thousands of dollars in incentives and savings by choosing environmentally friendly, energy efficient technologies.

Three of LEA's eleven partners - Evans Lizardos, President, Lewis Damrauer, Executive Vice President and Doug Pavone, Vice President - all agree that LIPA's professionalism and customer focused attitude helps support the LEA reputation of providing innovative solutions to their clients.

Evans Lizardos says "LIPA is customer focused and innovative. If LIPA is involved, we ask a question and get an immediate response. And that helps us provide answers to our clients."

LEA clients include North Shore Long Island Jewish Health System, Winthrop University Hospital, Catholic Health Services, Adelphi University and SUNY Farmingdale. These clients are generally knowledgeable about the most technologically advanced equipment available. And, if more information is required, LIPA's Major Account Executives like Brian Hassan (pictured above) can help provide solutions to energy needs.

LEA recommends that other firms actively seek out the resources that LIPA has available and embrace them. LIPA has assisted LEA and they are ready to help you as well.



Evans J. Lizardos, P.E., President, Lewis M. Damrauer, P.E., Executive Vice President, Brian Hassan, LIPA Major Account Representative and Douglas J. Pavone, P.E., Vice President review blueprints for an upcoming project.

Lewis Damrauer, Evans Lizardos and Douglas Pavone look over plans for future ventures.

If you'd like to be included on our e-mail list to receive "Trade News" electronically, please call us at

1-800-692-2626

www.lipower.org

Solutions Providers

Nassau County Sales Support

Joel Lein 631-436-5767
Joe Tartaglione 631-436-4050
Ken Trypuc 631-436-5772

Suffolk County Sales Support

Rob Scipioni 631-436-5759
Jim Soria 631-436-5773
Juli Griffiths 631-436-5776
Scott Iseman 631-436-5744



Technology Update: Inspector Guidelines for PV



In June 2003, the Interstate Renewable Energy Council, along with Pace University, held a meeting in Austin, Texas attended by LIPA representatives to discuss Electrical Inspector's Guidelines for PV (Solar Electric) Systems. Since then, IREC, Pace, Endecon Engineering, and the Florida Solar Energy Center have been working on the guidelines and ways to make them a matter of standard practice.

Local inspectors are encouraged to review the guidelines and provide any comments to the specific individual listed below. The guidelines have been written and formatted to be a useful instructional and field tool. The guidelines, when officially approved, can be adopted by authorities having jurisdiction.

To review the Draft Guidelines you can visit http://www.irecusa.org/articles/static/1/binaries/IREC_Draft_Interconnection_Guide_4th_ed_v4.pdf

Please send your Comments to:

Technical Content:

Bill Brooks, Endecon Engineering
Billb@endecon.com
707-332-0761

Implementation:

Jane Weisman, IREC
jane@irecusa.org
617-323-7377

Hands-on Training

LIPA's Trade Ally Initiative is all about partnering with the trades and providing solutions for their, and Long Island's, energy needs. On April 15, 2004, at SCECA Vendors Night, LIPA representatives were on hand to demonstrate proper wiring of a Trans-S cabinet. In addition, CT Templates were distributed to assure proper alignment with meter and equipment installation. The new template is a multi-purpose "Tool for Our Trades," that includes bolt alignments, important LIPA telephone numbers and a handy ruler. Outside, LIPA provided an exhibit of a Pad Mounted Transformer to illustrate additional wiring techniques.

As part of the Trade Ally Program, LIPA is dedicated to your success.



Check Our Web Site for New Info 24/7



Pad Mounted Transfer Display



MESSAGE BOARD

Professional Development Notices (PDNs)

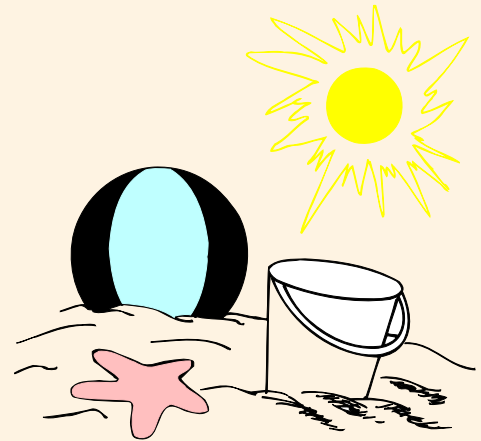
If you'd like to find out more about one the below programs and/or register, simply go to our online message board at: www.lipower.org/commercial/trade/message.html

2004 Upcoming Events:

LIPA Red Book Training was approved this year for Licensed Engineers and Registered Architects by the NY State Education Board. LIPA trained Long Island's Professional Engineers (PE's) and Registered Architects (RA's), in a partnership with The New York State Society of Professional Engineering, and, The American Institute of Architects.

Look for Upcoming Events in the fall.

LIPA wishes you and your staff a safe and successful summer!



TRADE NEWS

Volume III

1-800-692-2626

www.lipower.org

PRESORTED
FIRST CLASS
US POSTAGE
PAID
Hicksville, NY
Permit No. 12