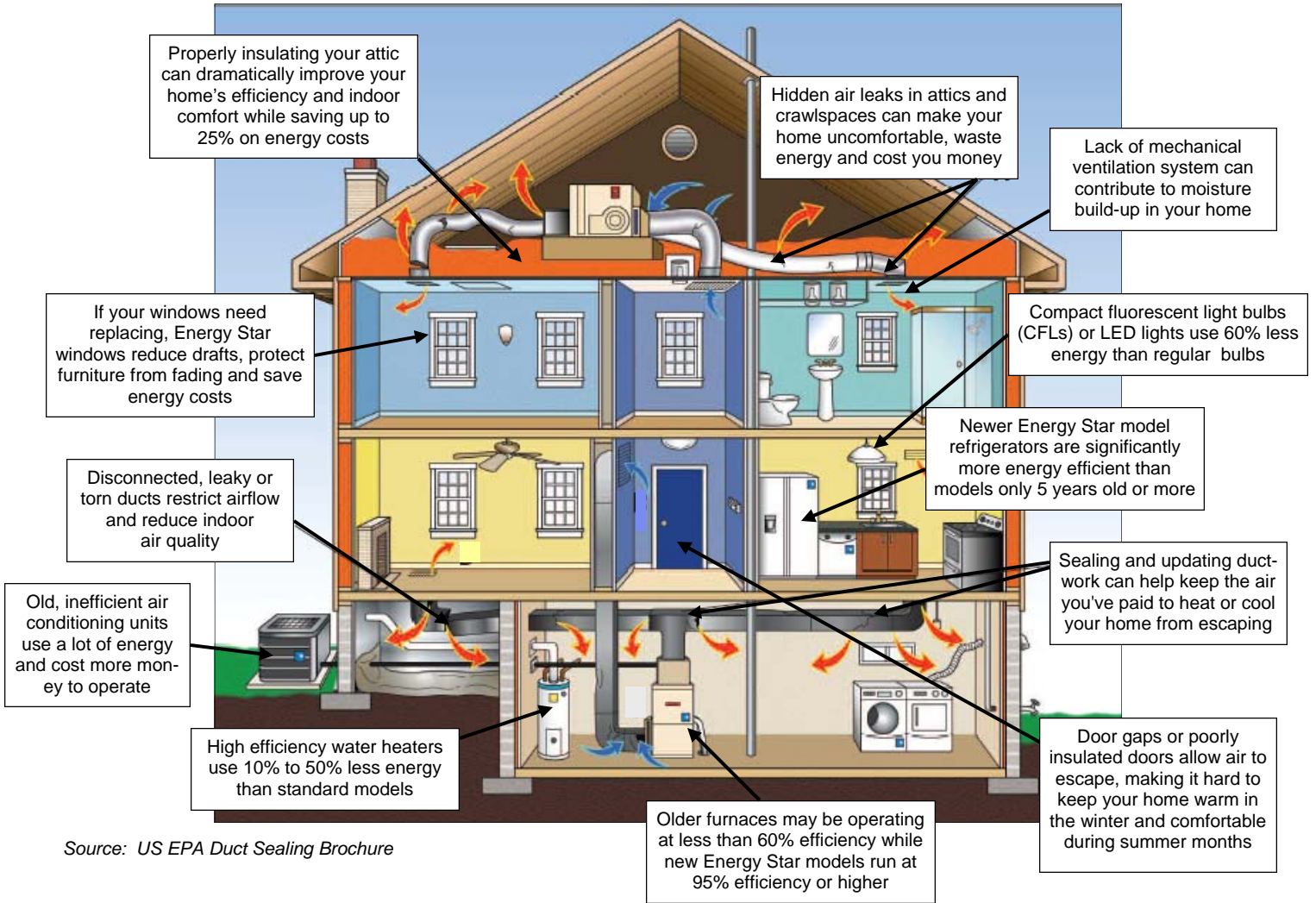


Typical Home Before a LIPA Comprehensive Home Assessment (CHA)



Source: US EPA Duct Sealing Brochure

Take The First Step Toward a More Energy Efficient & Comfortable Home

Long Islanders are spending more money than ever to heat and cool their homes. Many homeowners are not getting the comfort they are paying for due to poor insulation, leaky duct systems, drafty windows and inefficient appliances as well as other problems.

A comprehensive home assessment (CHA) is the first step towards improving a home's efficiency and reducing energy bills.

LIPA's Home Performance with ENERGY STAR® program created a network of independent home improvement contractors that are accredited by the Building Performance Institute.

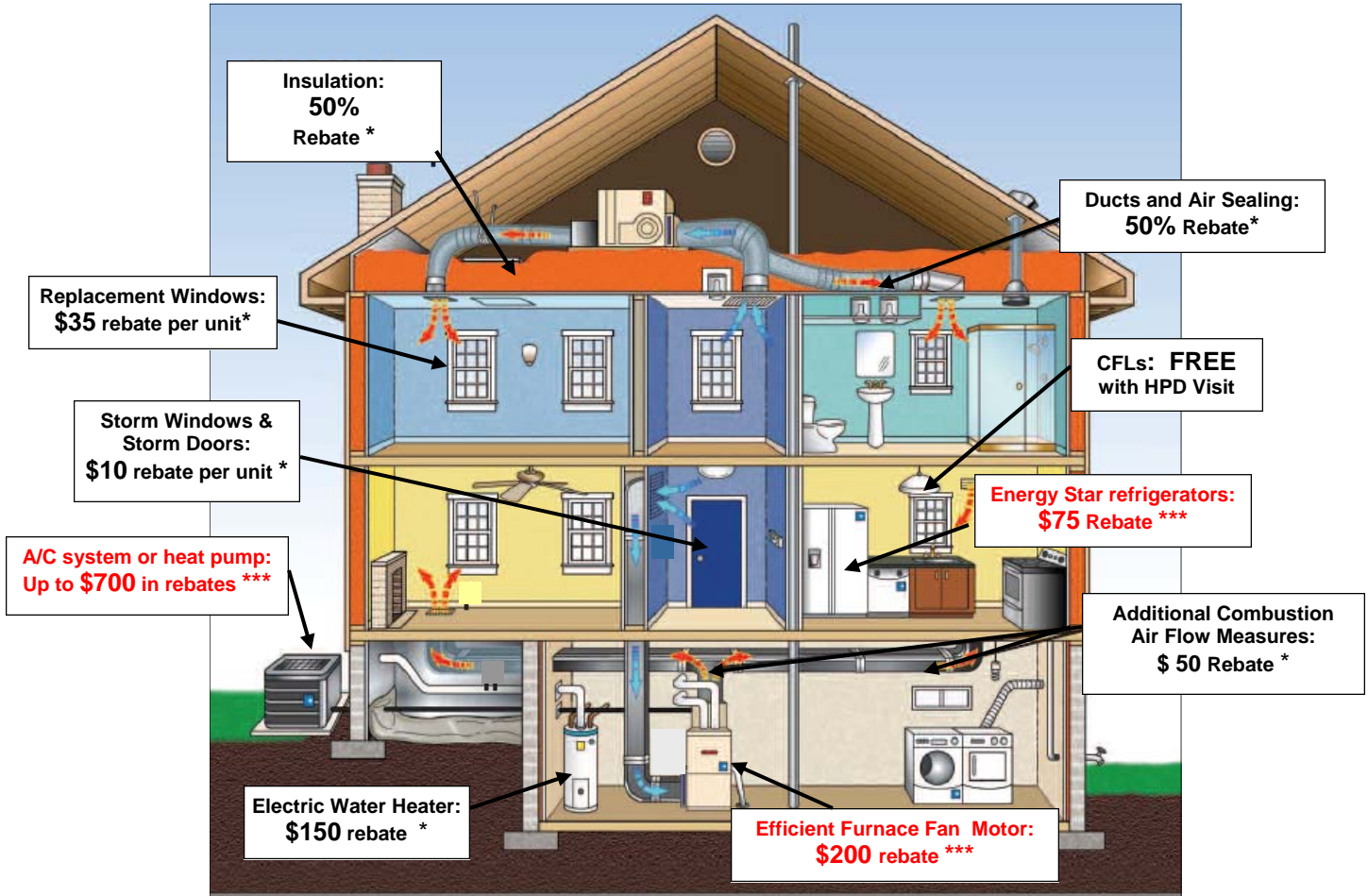
Through participation in LIPA's Home Performance with ENERGY STAR Program, Home Performance contractors have been trained in taking a "whole-house" approach when testing homes and identifying necessary energy efficiency improvements.

If you have a home with electric heat and/or fossil fuel heat with **high use central air conditioning**, you may be eligible to participate in LIPA's new Home Performance *Direct* Program and receive specific energy reduction and auditing services to help you reduce overall electricity use, save money and improve the health and safety of your home.

For more information on Home Performance *Direct*, please call **1-877-ESTAR-LI (1-877-378-2754)** or visit www.lipower.org

Typical Home

After LIPA Comprehensive Home Assessment (CHA) and Energy Saving Measures



Source: US EPA Duct Sealing Brochure

* Rebates include both primary and supplemental measures and are capped, per residential unit at **\$3,000** for homes with central A/C units or through the wall A/C units.

For more details, please visit: <http://www.lipower.org/pdfs/cei/cw/HP-incentive.pdf>

** If conducted in association with air/duct sealing and/or insulation upgrades.

*** For more information on LIPA time-sensitive incentives, please visit: <http://www.lipower.org/residential/efficiency/rebates>.